

For Research Use Only

CoraLite® Plus 488-conjugated CD68 Polyclonal antibody



Catalog Number: **CL488-28058**

Basic Information

Catalog Number:

CL488-28058

Size:

1000 µg/ml

Source:

Rabbit

Isotype:

IgG

Immunogen Catalog Number:

AG27827

GenBank Accession Number:

NM_001291058

GeneID (NCBI):

12514

UNIPROT ID:

P31996

Full Name:

CD68 antigen

Calculated MW:

35 kDa

Observed MW:

100 kDa

Purification Method:

Antigen affinity purification

Recommended Dilutions:

IF-P 1:50-1:500

Excitation/Emission maxima
wavelengths:

493 nm / 522 nm

Applications

Tested Applications:

IF-P

Species Specificity:

mouse

Positive Controls:

IF-P : mouse spleen tissue,

Background Information

Mouse CD68 (also known as macrophage marker) is a type I transmembrane glycoprotein that is highly and specifically expressed by mouse tissue macrophages, and to a lesser extent by dendritic cells. It belongs to the lysosomal/endosomal-associated membrane glycoprotein (LAMP) family and primarily localizes to lysosomes and endosomes with a smaller fraction circulating to the cell surface. CD68 is also a member of the scavenger receptor family. It may play a role in phagocytic activities of tissue macrophages.

Storage

Storage:

Store at -20°C. Avoid exposure to light. Stable for one year after shipment.

Storage Buffer:

PBS with 50% Glycerol, 0.05% Proclin300, 0.5% BSA, pH 7.3.

Aliquoting is unnecessary for -20°C storage

For technical support and original validation data for this product please contact:

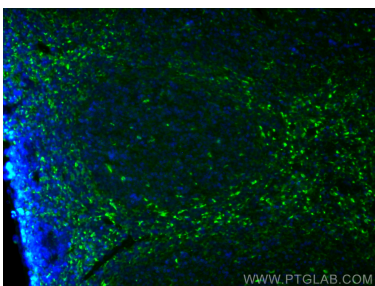
T: 4006900926

E: Proteintech-CN@ptglab.com

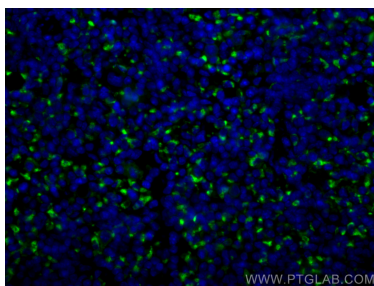
W: ptgcn.com

This product is exclusively available under Proteintech Group brand and is not available to purchase from any other manufacturer.

Selected Validation Data



Immunofluorescent analysis of (4% PFA) fixed mouse spleen tissue using Coralite® Plus 488 Cd68 antibody (CL488-28058) at dilution of 1:200.



Immunofluorescent analysis of (4% PFA) fixed mouse spleen tissue using Coralite® Plus 488 Cd68 antibody (CL488-28058) at dilution of 1:200.