

For Research Use Only

CoraLite® Plus 488-conjugated Neutrophil Elastase Polyclonal antibody

Catalog Number:CL488-27642



Basic Information

Catalog Number:

CL488-27642

Size:

1000 ug/ml

Source:

Rabbit

Isotype:

IgG

Immunogen Catalog Number:

AG26634

GenBank Accession Number:

BC074816

GeneID (NCBI):

1991

UNIPROT ID:

P08246

Full Name:

elastase 2, neutrophil

Calculated MW:

267 aa, 29 kDa

Observed MW:

29 kDa

Purification Method:

Antigen affinity purification

Recommended Dilutions:

IF/ICC 1:50-1:500

Excitation/Emission maxima
wavelengths:

493 nm / 522 nm

Applications

Tested Applications:

IF/ICC

Species Specificity:

human

Positive Controls:

IF/ICC : HEK-293 cells,

Background Information

ELA2(Neutrophil elastase) is also named as ELAL, NE, HLE, HNE, PMN-E, SERP1, GE, ELANE and belongs to the peptidase S1 family. It is a 33-kDa enzyme with several isoforms that differ in their extent of glycosylation(PMID:12223222). Human neutrophil elastase (HNE) is a serine protease with potent proteolytic activity (3), which is reported to cause mucin secretion (degranulation)(PMID:12169572). It may contribute to the directed migration of leukocytes into flamed postcapillary venules in addition to contributing to the process of tissue emigration(PMID:9683424). The full length protein has a signal peptide,propeptide and three glycosylation sites.

Storage

Storage:

Store at -20°C. Avoid exposure to light. Stable for one year after shipment.

Storage Buffer:

PBS with 50% Glycerol, 0.05% Proclin300, 0.5% BSA, pH 7.3.

Aliquoting is unnecessary for -20°C storage

For technical support and original validation data for this product please contact:

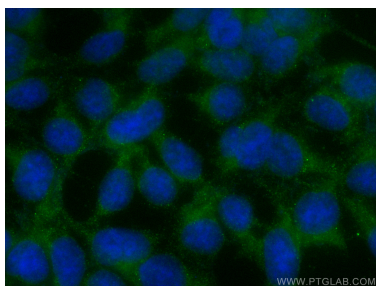
T: 4006900926

E: Proteintech-CN@ptglab.com

W: ptgcn.com

This product is exclusively available under Proteintech Group brand and is not available to purchase from any other manufacturer.

Selected Validation Data



Immunofluorescent analysis of (-20°C Ethanol) fixed HEK-293 cells using CoraLite® Plus 488 ELA2 antibody (CL488-27642) at dilution of 1:100.