

CoraLite® Plus 488-conjugated IRE1; ERN1 Polyclonal antibody

Catalog Number: **CL488-27528**

Basic Information

Catalog Number:

CL488-27528

Size:

1000 µg/ml

Source:

Rabbit

Isotype:

IgG

Immunogen Catalog Number:

AG25580

GenBank Accession Number:

BC130405

GeneID (NCBI):

2081

UNIPROT ID:

O75460

Full Name:

endoplasmic reticulum to nucleus
signaling 1

Calculated MW:

977 aa, 110 kDa

Observed MW:

130 kDa

Purification Method:

Antigen affinity purification

**Excitation/Emission maxima
wavelengths:**

493 nm / 522 nm

Applications

Tested Applications:

FC (Intra)

Species Specificity:

human

Background Information

Inositol-requiring enzyme 1 (IRE1) is an ER transmembrane sensor that activates the UPR to maintain the ER and cellular function. Although mammalian IRE1 promotes cell survival, it can initiate apoptosis via decay of antiapoptotic miRNAs. IRE1 contains a ribonuclease domain in its cytoplasmic region which initiates splicing reaction by direct cleavage of XBP1 mRNA at the two stem loop structures. IRE1 plays instrumental protumoral roles in several cancers, and high IRE1 activity has been associated with poorer prognoses. (PMID: 23880584, PMID: 32861679, PMID: 31875595)

Storage

Storage:

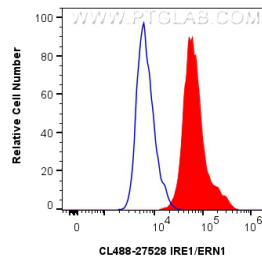
Store at -20°C. Avoid exposure to light. Stable for one year after shipment.

Storage Buffer:

PBS with 50% Glycerol, 0.05% Proclin300, 0.5% BSA, pH 7.3.

Aliquoting is unnecessary for -20°C storage

Selected Validation Data



1x10⁶ A549 cells were intracellularly stained with 0.8 ug CoraLite® Plus 488 Anti-Human IRE1; ERN1 (CL488-27528)(red), or 0.8 ug CoraLite® Plus 488-conjugated Rabbit IgG control Rabbit PolyAb (CL488-30000) (blue). Cells were fixed with 4% PFA and permeabilized with Flow Cytometry Perm Buffer (PF00011-C).