

For Research Use Only

CoraLite® Plus 488-conjugated NPPA Polyclonal antibody



Catalog Number: **CL488-27426**

Basic Information

Catalog Number:

CL488-27426

Size:

1000 µg/ml

Source:

Rabbit

Isotype:

IgG

Immunogen Catalog Number:

AG26692

GenBank Accession Number:

BC005893

GeneID (NCBI):

4878

UNIPROT ID:

P01160

Full Name:

natriuretic peptide precursor A

Calculated MW:

153 aa, 17 kDa

Observed MW:

19 kDa

Purification Method:

Antigen affinity purification

Recommended Dilutions:

IF/ICC 1:50-1:500

Excitation/Emission maxima
wavelengths:

493 nm / 522 nm

Applications

Tested Applications:

IF/ICC

Species Specificity:

human, mouse, rat

Positive Controls:

IF/ICC : C2C12 cells,

Background Information

Natriuretic peptide precursor-A (NPPA) is an early and specific marker for functional myocardium of the embryonic heart. This protein is synthesized as a large precursor (containing a signal peptide), which is processed to release a peptide from the N-terminus with similarity to vasoactive peptide, cardiodilatin, and another peptide from the C-terminus with natriuretic-diuretic activity. NPPA is expressed primarily in the heart, where the expression level is higher in atria than ventricles. Low levels of ANP expression have been detected in other tissues, including the lung, aorta, brain, adrenal gland, kidney and uterus.

Storage

Storage:

Store at -20°C. Avoid exposure to light. Stable for one year after shipment.

Storage Buffer:

PBS with 50% Glycerol, 0.05% Proclin300, 0.5% BSA, pH 7.3.

Aliquoting is unnecessary for -20°C storage

For technical support and original validation data for this product please contact:

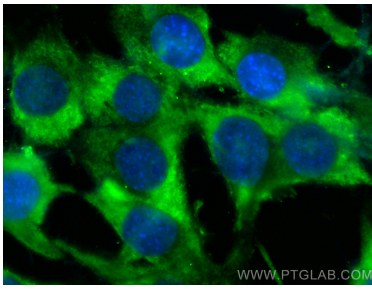
T: 4006900926

E: Proteintech-CN@ptglab.com

W: ptgcn.com

This product is exclusively available under Proteintech Group brand and is not available to purchase from any other manufacturer.

Selected Validation Data



Immunofluorescent analysis of (-20°C Methanol) fixed C2C12 cells using CoraLite® Plus 488 NPPA antibody (CL488-27426) at dilution of 1:200.