

For Research Use Only

CoraLite® Plus 488-conjugated Occludin Polyclonal antibody

Catalog Number: CL488-27260

2 Publications



Basic Information

Catalog Number:

CL488-27260

Size:

1000 µg/ml

Source:

Rabbit

Isotype:

IgG

Immunogen Catalog Number:

AG26173

GenBank Accession Number:

BC029886

GeneID (NCBI):

4950

UNIPROT ID:

Q16625

Full Name:

occludin

Calculated MW:

522 aa, 59 kDa

Purification Method:

Antigen affinity purification

Recommended Dilutions:

IF/ICC 1:400-1:1600

Excitation/Emission maxima wavelengths:

493 nm / 522 nm

Applications

Tested Applications:

IF/ICC, FC (Intra)

Cited Applications:

IF

Species Specificity:

human

Cited Species:

human, mouse

Positive Controls:

IF/ICC : MCF-7 cells, Caco-2 cells

Background Information

Occludin is an integral membrane protein located at the tight junction. It is a tetraspanin protein with four transmembrane domains, intracellular N and C termini and two extracellular loops. Occludin plays a role in the formation and regulation of the tight junction paracellular permeability barrier. Occludin can exist in different isoforms, owing to modifications at the posttranscriptional and posttranslational levels, the monomeric occludin migrates as 53-65 kDa on SDS-PAGE (PMID: 22083955; 19457074).

Notable Publications

Author	Pubmed ID	Journal	Application
Huixin Xu	39089253	Cell	IF
Jacquelyn A Brown	38783199	J Neurodev Disord	IF

Storage

Storage:

Store at -20°C. Avoid exposure to light. Stable for one year after shipment.

Storage Buffer:

PBS with 50% Glycerol, 0.05% Proclin300, 0.5% BSA, pH 7.3.

Aliquoting is unnecessary for -20°C storage

For technical support and original validation data for this product please contact:

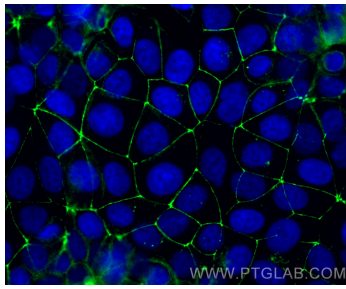
T: 4006900926

E: Proteintech-CN@ptglab.com

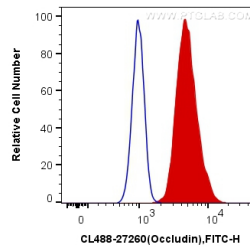
W: ptgcn.com

This product is exclusively available under Proteintech Group brand and is not available to purchase from any other manufacturer.

Selected Validation Data



Immunofluorescent analysis of (4% PFA) fixed MCF-7 cells using CoraLite® Plus 488 Occludin antibody (CL488-27260) at dilution of 1:800.



1X10⁶ MCF-7 cells were intracellularly stained with 0.4 ug CoraLite® Plus 488 Anti-Human Occludin (CL488-27260) (red), or 0.4 ug Control Antibody. Cells were fixed with 4% PFA and permeabilized with Flow Cytometry Perm Buffer (PF00011-C).