

For Research Use Only

CoraLite® Plus 488-conjugated Ezrin Polyclonal antibody

Catalog Number: CL488-26056

Featured Product



Basic Information

Catalog Number:

CL488-26056

Size:

1000 ug/ml

Source:

Rabbit

Isotype:

IgG

Immunogen Catalog Number:

AG23530

GenBank Accession Number:

BC013903

GeneID (NCBI):

7430

ENSEMBL Gene ID:

ENSG00000092820

UNIPROT ID:

P15311

Full Name:

ezrin

Calculated MW:

69 kDa

Observed MW:

70-75 kDa

Purification Method:

Antigen affinity purification

Recommended Dilutions:

IF/ICC 1:300-1:1200

Excitation/Emission maxima wavelengths:

493 nm / 522 nm

Applications

Tested Applications:

IF/ICC, FC (Intra)

Species Specificity:

human, mouse

Positive Controls:

IF/ICC : HeLa cells,

Background Information

Storage

Storage:

Store at -20°C. Avoid exposure to light. Stable for one year after shipment.

Storage Buffer:

PBS with 50% Glycerol, 0.05% Proclin300, 0.5% BSA, pH 7.3.

Aliquoting is unnecessary for -20°C storage

For technical support and original validation data for this product please contact:

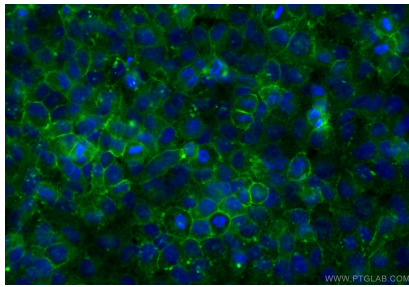
T: 4006900926

E: Proteintech-CN@ptglab.com

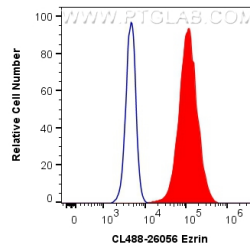
W: ptgcn.com

This product is exclusively available under Proteintech Group brand and is not available to purchase from any other manufacturer.

Selected Validation Data



Immunofluorescent analysis of (-20°C Ethanol) fixed HeLa cells using CoraLite® Plus 488 Ezrin antibody (CL488-26056) at dilution of 1:600.



1X10⁶ HeLa cells were intracellularly stained with 0.4 ug CoraLite® Plus 488 Anti-Human Ezrin (CL488-26056) (red), or 0.4 ug Control Antibody. Cells were fixed with 4% PFA and permeabilized with Flow Cytometry Perm Buffer (PF00011-C).