

For Research Use Only

CoraLite® Plus 488-conjugated AZI1 Polyclonal antibody



Catalog Number: CL488-25735

Featured Product

Basic Information

Catalog Number:

CL488-25735

Size:

1000 µg/ml

Source:

Rabbit

Isotype:

IgG

Immunogen Catalog Number:

AG22699

GenBank Accession Number:

BC136578

GeneID (NCBI):

22994

UNIPROT ID:

Q9UPN4

Full Name:

5-azacytidine induced 1

Calculated MW:

1083 aa, 122 kDa

Observed MW:

131 kDa

Purification Method:

Antigen affinity purification

Excitation/Emission maxima wavelengths:

493 nm / 522 nm

Applications

Tested Applications:

FC (Intra)

Species Specificity:

human, mouse

Background Information

AZI1, also named as CEP131 and KIAA1118, may play a role in spermatogenesis. It is located at the ciliary base and required for cilium formation.

Storage

Storage:

Store at -20°C. Avoid exposure to light.

Storage Buffer:

PBS with 50% Glycerol, 0.05% Proclin300, 0.5% BSA, pH 7.3.

Aliquoting is unnecessary for -20°C storage

For technical support and original validation data for this product please contact:

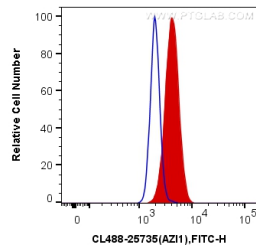
T: 4006900926

E: Proteintech-CN@ptglab.com

W: ptgcn.com

This product is exclusively available under Proteintech Group brand and is not available to purchase from any other manufacturer.

Selected Validation Data



1X10⁶ HeLa cells were intracellularly stained with 0.4 ug CoraLite® Plus 488 Anti-Human AZI1 (CL488-25735) (red), or 0.4 ug Control Antibody. Cells were fixed with 4% PFA and permeabilized with Flow Cytometry Perm Buffer (PF00011-C).