

For Research Use Only

# CoraLite® Plus 488-conjugated CCT2 Polyclonal antibody

Catalog Number: CL488-24896

Featured Product



## Basic Information

Catalog Number:

CL488-24896

Source:

Rabbit

Isotype:

IgG

Immunogen Catalog Number:

AG19264

GenBank Accession Number:

BC113516

GeneID (NCBI):

10576

UNIPROT ID:

P78371

Full Name:

chaperonin containing TCP1, subunit 2 (beta)

Calculated MW:

535 aa, 57 kDa

Observed MW:

50-58 kDa

Purification Method:

Antigen affinity purification

Recommended Dilutions:

IF/ICC: 1:50-1:500

FC (Intra): 0.80 ug per 10<sup>6</sup> cells in a 100 µl suspension

Excitation/Emission maxima wavelengths:

493 nm / 522 nm

## Applications

Tested Applications:

IF/ICC, FC (Intra)

Species Specificity:

human, mouse

Positive Controls:

IF/ICC : NIH/3T3 cells,

FC (Intra) : NIH/3T3 cells,

## Background Information

CCT2 is a gene encoding a molecular chaperone member of the chaperonin-containing TCP1 complex (CCT), also known as the TCP1 ring complex (TRiC). The switch of CCT2's role from a chaperonin to a specific aggregophagy receptor is achieved by CCT2 monomer formation. CCT2 functions independently of ubiquitin and the TRiC complex to facilitate the autophagic clearance of solid protein aggregates. CCT2 has 2 isoforms with a molecular mass of 53 and 57 kDa. (PMID: 35699934)

## Storage

Storage:

Store at -20°C. Avoid exposure to light. Stable for one year after shipment.

Storage Buffer:

PBS with 50% glycerol, 0.05% Proclin300, 0.5% BSA, pH7.3

Aliquoting is unnecessary for -20°C storage

For technical support and original validation data for this product please contact:

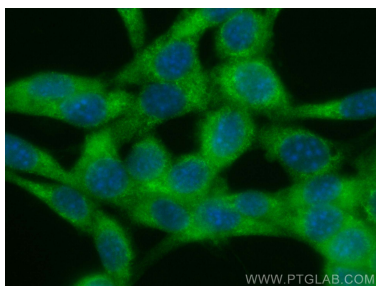
T: 4006900926

E: [Proteintech-CN@ptglab.com](mailto:Proteintech-CN@ptglab.com)

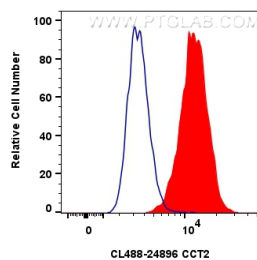
W: [ptgcn.com](http://ptgcn.com)

This product is exclusively available under Proteintech Group brand and is not available to purchase from any other manufacturer.

## Selected Validation Data



Immunofluorescent analysis of (-20°C Ethanol) fixed NIH/3T3 cells using CoraLite® Plus 488 CCT2 antibody (CL488-24896) at dilution of 1:200.



1x10<sup>6</sup> NIH/3T3 cells were intracellularly stained with 0.8 ug CoraLite® Plus 488 Cct2 Polyclonal Antibody (CL488-24896)(red), or 0.8 ug CoraLite® Plus 488-conjugated Rabbit IgG control Rabbit PolyAb (CL488-30000) (blue). Cells were fixed with 4% PFA and permeabilized with Flow Cytometry Perm Buffer.