

For Research Use Only

CoraLite® Plus 488-conjugated CEP135 Polyclonal antibody



Catalog Number: **CL488-24428**

Basic Information

Catalog Number:

CL488-24428

Size:

1000 µg/ml

Source:

Rabbit

Isotype:

IgG

Immunogen Catalog Number:

AG19122

GenBank Accession Number:

BC136535

GeneID (NCBI):

9662

UNIPROT ID:

Q66GS9

Full Name:

centrosomal protein 135kDa

Calculated MW:

1140 aa, 134 kDa

Observed MW:

133 kDa

Purification Method:

Antigen affinity purification

Recommended Dilutions:

IF/ICC 1:50-1:500

Excitation/Emission maxima
wavelengths:

493 nm / 522 nm

Applications

Tested Applications:

IF/ICC

Species Specificity:

human, Canine

Positive Controls:

IF/ICC : HeLa cells,

Background Information

Storage

Storage:

Store at -20°C. Avoid exposure to light. Stable for one year after shipment.

Storage Buffer:

PBS with 50% Glycerol, 0.05% Proclin300, 0.5% BSA, pH 7.3.

Aliquoting is unnecessary for -20°C storage

For technical support and original validation data for this product please contact:

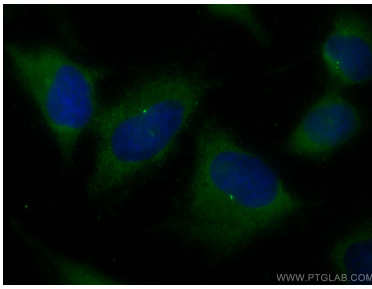
T: 4006900926

E: Proteintech-CN@ptglab.com

W: ptgcn.com

This product is exclusively available under Proteintech Group brand and is not available to purchase from any other manufacturer.

Selected Validation Data



Immunofluorescent analysis of (-20°C Methanol) fixed HeLa cells using Coralite® Plus 488 CEP135 antibody (CL488-24428) at dilution of 1:200.