

For Research Use Only

CoraLite® Plus 488-conjugated Eg5 Polyclonal antibody



Catalog Number: CL488-23333

Featured Product

Basic Information

Catalog Number:

CL488-23333

Size:

1000 µg/ml

Source:

Rabbit

Isotype:

IgG

Immunogen Catalog Number:

AG18695

GenBank Accession Number:

BC136474

GeneID (NCBI):

3832

UNIPROT ID:

P52732

Full Name:

kinesin family member 11

Calculated MW:

1056 aa, 119 kDa

Observed MW:

120-130 kDa

Purification Method:

Antigen affinity purification

Recommended Dilutions:

IF 1:50-1:500

Excitation/Emission maxima
wavelengths:

493 nm / 522 nm

Applications

Tested Applications:

IF/ICC, FC (Intra)

Species Specificity:

human

Positive Controls:

IF : HepG2 cells,

Background Information

Eg5 is a plus-end-directed microtubule motor encoded by KIF11 gene. It is an essential mitotic kinesin that plays a pivotal role in the formation and maintenance of bipolar spindle during early prometaphase. Eg5 has been implicated in tumorigenesis, and its overexpression has been found in various cancer tissues.

Storage

Storage:

Store at -20°C. Avoid exposure to light. Stable for one year after shipment.

Storage Buffer:

PBS with 50% Glycerol, 0.05% Proclin300, 0.5% BSA, pH 7.3.

Aliquoting is unnecessary for -20°C storage

For technical support and original validation data for this product please contact:

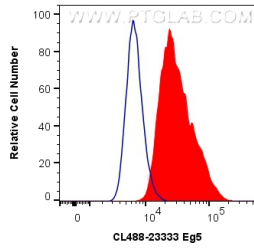
T: 4006900926

E: Proteintech-CN@ptglab.com

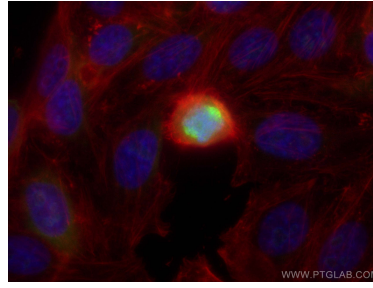
W: ptgcn.com

This product is exclusively available under Proteintech Group brand and is not available to purchase from any other manufacturer.

Selected Validation Data



1X10⁶ HeLa cells were intracellularly stained with 0.4 ug CoraLite® Plus 488 Anti-Human Eg5 (CL488-23333) (red), or 0.4 ug Isotype Control. Cells were fixed with 4% PFA and permeabilized with Flow Cytometry Perm Buffer (PF00011-C).



Immunofluorescent analysis of (4% PFA) fixed HepG2 cells using CoraLite® Plus 488 Eg5 antibody (CL488-23333) at dilution of 1:200, CL594-phalloidin (red).