

CoraLite® Plus 488-conjugated SCP3 Polyclonal antibody

Catalog Number: **CL488-23024**

Basic Information

Catalog Number:

CL488-23024

Size:

1000 µg/ml

Source:

Rabbit

Isotype:

IgG

Immunogen Catalog Number:

AG19330

GenBank Accession Number:

BC062662

GeneID (NCBI):

50511

UNIPROT ID:

Q8IZU3

Full Name:

synaptonemal complex protein 3

Calculated MW:

236 aa, 28 kDa

Observed MW:

30 kDa, 33 kDa

Purification Method:

Antigen affinity purification

Excitation/Emission maxima wavelengths:

493 nm / 522 nm

Applications

Tested Applications:

FC (Intra)

Species Specificity:

human, mouse, rat

Background Information

SYCP3 is an essential structural component of the synaptonemal complex. This complex is involved in synapsis, recombination and segregation of meiotic chromosomes. SYCP3 is required for centromere pairing during meiosis in male germ cells. SYCP3 is also required for normal meiosis during spermatogenesis and male fertility. Mutations in SYCP3 are associated with azoospermia in males and susceptibility to pregnancy loss in females.

Storage

Storage:

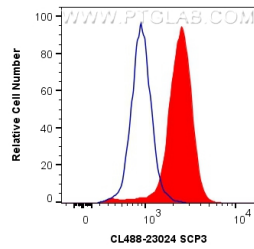
Store at -20°C. Avoid exposure to light. Stable for one year after shipment.

Storage Buffer:

PBS with 50% Glycerol, 0.05% Proclin300, 0.5% BSA, pH 7.3.

Aliquoting is unnecessary for -20°C storage

Selected Validation Data



1X10⁶ Jurkat cells were intracellularly stained with 0.8 ug CoraLite® Plus 488 Anti-Human SCP3 (CL488-23024) (red), or 0.8 ug Control Antibody. Cells were fixed and permeabilized with Transcription Factor Staining Buffer Kit (PF00011).