

For Research Use Only

CoraLite®488-conjugated FSHR Polyclonal antibody

Catalog Number: CL488-22665

Featured Product



Basic Information

Catalog Number:

CL488-22665

Concentration:

1000 µg/ml

Source:

Rabbit

Isotype:

IgG

Immunogen Catalog Number:

AG18158

GenBank Accession Number:

BC118548

GeneID (NCBI):

2492

UNIPROT ID:

P23945

Full Name:

follicle stimulating hormone receptor

Calculated MW:

695 aa, 78 kDa

Observed MW:

71-78 kDa

Purification Method:

Antigen affinity purification

Excitation/Emission maxima
wavelengths:

491 nm / 516 nm

Applications

Tested Applications:

FC (Intra)

Species Specificity:

human

Background Information

FSHR, also named as LGR1, belongs to the G-protein coupled receptor 1 family and FSH/LSH/TSH subfamily. FSHR is a receptor for follicle-stimulating hormone. The activity of this receptor is mediated by G proteins which activate adenylate cyclase. Defects in FSHR are a cause of ovarian dysgenesis type 1 (ODG1). Defects in FSHR are a cause of ovarian hyperstimulation syndrome (OHSS). This antibody is specific to FSHR.

Storage

Storage:

Store at -20°C. Avoid exposure to light. Stable for one year after shipment.

Storage Buffer:

PBS with 50% glycerol, 0.05% Proclin300, 0.5% BSA, pH7.3

Aliquoting is unnecessary for -20°C storage

For technical support and original validation data for this product please contact:

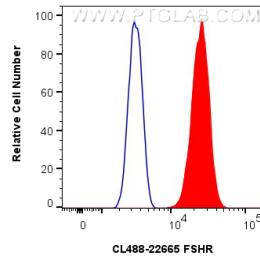
T: 4006900926

E: Proteintech-CN@ptglab.com

W: ptgcn.com

This product is exclusively available under Proteintech Group brand and is not available to purchase from any other manufacturer.

Selected Validation Data



1x10⁶ HeLa cells were intracellularly stained with 0.4 ug Coralite®488-conjugated FSHR Polyclonal antibody (CL488-22665)(red), or 0.4 ug Isotype Control (blue). Cells were fixed with 4% PFA and permeabilized with Flow Cytometry Perm Buffer (PF00011-C).