

For Research Use Only

# CoraLite® Plus 488-conjugated WDR61 Polyclonal antibody



Catalog Number: **CL488-22536**

## Basic Information

Catalog Number:

CL488-22536

Size:

1000 µg/ml

Source:

Rabbit

Isotype:

IgG

Immunogen Catalog Number:

AG18443

GenBank Accession Number:

BC010080

GeneID (NCBI):

80349

UNIPROT ID:

Q9GZS3

Full Name:

WD repeat domain 61

Calculated MW:

305 aa, 34 kDa

Observed MW:

33 kDa

Purification Method:

Antigen affinity purification

Excitation/Emission maxima  
wavelengths:

493 nm / 522 nm

## Applications

Tested Applications:

FC (Intra)

Species Specificity:

human, mouse, rat

## Background Information

Component of the PAF1 complex (PAF1C) which has multiple functions during transcription by RNA polymerase II and is implicated in regulation of development and maintenance of embryonic stem cell pluripotency (refer to UniProt). Catalog#22536-1-AP is a rabbit polyclonal antibody raised against the full-length of human WDR61. The MW of this protein is 33 kDa, and this antibody specially recognises the 33 kDa protein.

## Storage

Storage:

Store at -20°C. Avoid exposure to light. Stable for one year after shipment.

Storage Buffer:

PBS with 50% Glycerol, 0.05% Proclin300, 0.5% BSA, pH 7.3.

Aliquoting is unnecessary for -20°C storage

For technical support and original validation data for this product please contact:

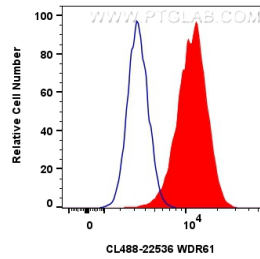
T: 4006900926

E: [Proteintech-CN@ptglab.com](mailto:Proteintech-CN@ptglab.com)

W: [ptgcn.com](http://ptgcn.com)

This product is exclusively available under Proteintech Group brand and is not available to purchase from any other manufacturer.

## Selected Validation Data



1x10<sup>6</sup> HeLa cells were intracellularly stained with 0.8 ug CoraLite® Plus 488 Anti-Human WDR61 (CL488-22536)(red), or 0.8 ug CoraLite® Plus 488-conjugated Rabbit IgG control Rabbit PolyAb (CL488-30000) (blue). Cells were fixed and permeabilized with Transcription Factor Staining Buffer Kit (PF00011).