

For Research Use Only

# CoraLite® Plus 488-conjugated MYH6 Polyclonal antibody



Catalog Number: CL488-22281

Featured Product

## Basic Information

Catalog Number:

CL488-22281

Size:

1000 µg/ml

Source:

Rabbit

Isotype:

IgG

GenBank Accession Number:

NM\_002471

GeneID (NCBI):

4624

UNIPROT ID:

P13533

Full Name:

myosin, heavy chain 6, cardiac muscle, alpha

Calculated MW:

224 kDa

Observed MW:

200-220 kDa

Purification Method:

Antigen affinity purification

Recommended Dilutions:

IF-P 1:50-1:500

Excitation/Emission maxima wavelengths:

493 nm / 522 nm

## Applications

Tested Applications:

IF-P

Species Specificity:

human, mouse, rat

Positive Controls:

IF-P: mouse heart tissue,

## Background Information

MYH6 encodes the alpha-cardiac myosin heavy chain (αMHC) which is a major contractile protein exclusively expressed in the myocardium of the heart. Expression of MYH6 is down-regulated in cardiac myopathy and failing hearts. Defects in MYH6 lead to congenital heart disease (CHD), and a spectrum of phenotypes ranging from hypertrophic cardiomyopathy (HCM) and dilated cardiomyopathy (DCM). (15737621, 20656787)

## Storage

Storage:

Store at -20°C. Avoid exposure to light. Stable for one year after shipment.

Storage Buffer:

PBS with 50% Glycerol, 0.05% Proclin300, 0.5% BSA, pH 7.3.

Aliquoting is unnecessary for -20°C storage

For technical support and original validation data for this product please contact:

T: 4006900926

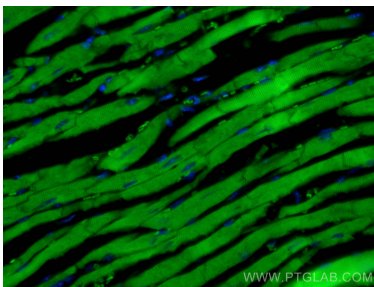
E: [Proteintech-CN@ptglab.com](mailto:Proteintech-CN@ptglab.com)

W: [ptgcn.com](http://ptgcn.com)

This product is exclusively available under Proteintech Group brand and is not available to purchase from any other manufacturer.

---

## Selected Validation Data



Immunofluorescent analysis of (4% PFA) fixed mouse heart tissue using CoraLite® Plus 488 MYH6 antibody (CL488-22281) at dilution of 1:200.