

For Research Use Only

CoraLite® Plus 488-conjugated CPT1B-specific Polyclonal antibody



Catalog Number: CL488-22170

Featured Product

Basic Information

Catalog Number:

CL488-22170

Size:

1000 µg/ml

Source:

Rabbit

Isotype:

IgG

Immunogen Catalog Number:

AG17840

GenBank Accession Number:

BC131570

GeneID (NCBI):

1375

UNIPROT ID:

Q92523

Full Name:

carnitine palmitoyltransferase 1B
(muscle)

Calculated MW:

567 aa, 64 kDa

Observed MW:

75-85 kDa

Purification Method:

Antigen affinity purification

Recommended Dilutions:

IF-P 1:50-1:500

Excitation/Emission maxima
wavelengths:

493 nm / 522 nm

Applications

Tested Applications:

IF-P

Species Specificity:

human, mouse, rat

Positive Controls:

IF-P: mouse heart tissue,

Background Information

Carnitine palmitoyltransferases (CPTs) mediate the transport of long chain fatty acyl groups into the mitochondrial matrix to undergo β -oxidation. Type I CPT resides in the outer mitochondrial membrane. Mammalian tissues express three isoforms: CPT1A (liver), CPT1B (muscle and heart), and CPT1C (brain). Several isoforms of CPT1B exist due to the alternative splicing, with predicted MW of 88/84/79/66 kDa.

Storage

Storage:

Store at -20°C. Avoid exposure to light. Stable for one year after shipment.

Storage Buffer:

PBS with 50% Glycerol, 0.05% Proclin300, 0.5% BSA, pH 7.3.

Aliquoting is unnecessary for -20°C storage

For technical support and original validation data for this product please contact:

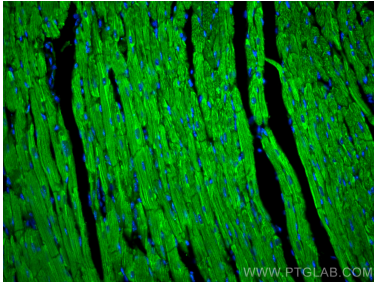
T: 4006900926

E: Proteintech-CN@ptglab.com

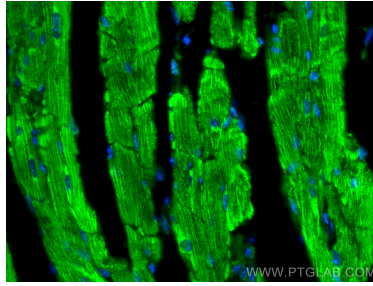
W: ptgcn.com

This product is exclusively available under Proteintech Group brand and is not available to purchase from any other manufacturer.

Selected Validation Data



Immunofluorescent analysis of (4% PFA) fixed mouse heart tissue using Coralite® Plus 488 CPT1B-specific antibody (CL488-22170) at dilution of 1:200.



Immunofluorescent analysis of (4% PFA) fixed mouse heart tissue using Coralite® Plus 488 CPT1B-specific antibody (CL488-22170) at dilution of 1:200.