

For Research Use Only

CoraLite® Plus 488-conjugated RRBP1 Polyclonal antibody

Catalog Number: CL488-22015

Featured Product



Basic Information

Catalog Number:

CL488-22015

Source:

Rabbit

Isotype:

IgG

Immunogen Catalog Number:

AG16648

GenBank Accession Number:

BC128577

GeneID (NCBI):

6238

UNIPROT ID:

Q9P2E9

Full Name:

ribosome binding protein 1 homolog
180kDa (dog)

Calculated MW:

1410 aa, 152 kDa

Observed MW:

180 kDa

Purification Method:

Antigen Affinity Purified

Recommended Dilutions:

FC (Intra): 0.40 ug per 10⁶ cells in a
100 µl suspension

Excitation/Emission maxima
wavelengths:

493 nm / 522 nm

Applications

Tested Applications:

FC (Intra)

Species Specificity:

human, mouse

Positive Controls:

FC (Intra) : HeLa cells,

Background Information

Ribosome-binding protein 1 (RRBP1) is an endoplasmic reticulum membrane protein. It is a 1410 amino acid protein composed of a hydrophobic NH₂-terminus that includes a transmembrane domain, a highly conserved tandem repeat (ribosome-binding domain), and an acidic coiled-coil COOH-terminal domain. RRBP1 acts as a ribosome receptor and mediates interaction between the ribosome and the endoplasmic reticulum membrane. It is also involved in early cardiac morphogenesis. (PMID: 22709790; 8812507; 7686155)

Storage

Storage:

Store at -20°C. Avoid exposure to light. Stable for one year after shipment.

Storage Buffer:

PBS with 50% glycerol, 0.05% Proclin300, 0.5% BSA, pH7.3

Aliquoting is unnecessary for -20°C storage

For technical support and original validation data for this product please contact:

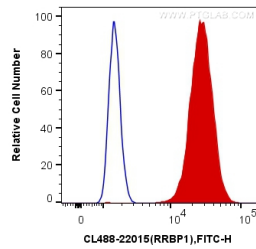
T: 4006900926

E: Proteintech-CN@ptglab.com

W: ptgcn.com

This product is exclusively available under Proteintech Group brand and is not available to purchase from any other manufacturer.

Selected Validation Data



1×10^6 HeLa cells were intracellularly stained with 0.4 μ g CoraLite® Plus 488 Anti-Human RRBP1 (CL488-22015) (red), or 0.4 μ g Control Antibody. Cells were fixed with 4% PFA and permeabilized with Flow Cytometry Perm Buffer.