

For Research Use Only

# CoraLite® Plus 488-conjugated CD107a / LAMP1 Polyclonal antibody



Catalog Number: CL488-21997

## Basic Information

<b>Catalog Number:</b> CL488-21997	<b>GenBank Accession Number:</b> BC021288	<b>Purification Method:</b> Antigen affinity purification
<b>Size:</b> 1000 µg/ml	<b>GeneID (NCBI):</b> 3916	<b>Excitation/Emission maxima wavelengths:</b> 493 nm / 522 nm
<b>Source:</b> Rabbit	<b>ENSEMBL Gene ID:</b> ENSG00000185896	
<b>Isotype:</b> IgG	<b>UNIPROT ID:</b> P11279	
<b>Immunogen Catalog Number:</b> AG17367	<b>Full Name:</b> lysosomal-associated membrane protein 1	
	<b>Calculated MW:</b> 417 aa, 45 kDa	
	<b>Observed MW:</b> 120 kDa	

## Applications

**Tested Applications:**  
FC (Intra)

**Species Specificity:**  
human

## Background Information

LAMP1 (also known as CD107a) is a 90-120 kDa heavily glycosylated membrane protein enriched in the lysosomal membrane. LAMP1 functions to provide selectins with carbohydrate ligands. This protein has also been shown to be a marker of degranulation on lymphocytes such as CD8+ and NK cells and may also play a role in tumor cell differentiation and metastasis.

## Storage

**Storage:**  
Store at -20°C. Avoid exposure to light. Stable for one year after shipment.

**Storage Buffer:**  
PBS with 50% Glycerol, 0.05% Proclin300, 0.5% BSA, pH 7.3.

**Aliquoting is unnecessary for -20°C storage**

For technical support and original validation data for this product please contact:

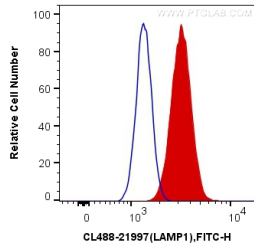
T: 4006900926

E: [Proteintech-CN@ptglab.com](mailto:Proteintech-CN@ptglab.com)

W: [ptgcn.com](http://ptgcn.com)

**This product is exclusively available under Proteintech Group brand and is not available to purchase from any other manufacturer.**

## Selected Validation Data



1X10<sup>6</sup> HepG2 cells were intracellularly stained with 0.4 ug CoraLite® Plus 488 Anti-Human LAMP1 (CL488-21997) (red), or 0.4 ug Control Antibody. Cells were fixed with 4% PFA and permeabilized with Flow Cytometry Perm Buffer (PF00011-C).