

For Research Use Only

# CoraLite® Plus 488-conjugated SP1 Polyclonal antibody



Catalog Number: CL488-21962

Featured Product

## Basic Information

Catalog Number:

CL488-21962

Size:

1000 µg/ml

Source:

Rabbit

Isotype:

IgG

Immunogen Catalog Number:

AG16720

GenBank Accession Number:

BC062539

GeneID (NCBI):

6667

ENSEMBL Gene ID:

ENSG00000185591

UNIPROT ID:

P08047

Full Name:

Sp1 transcription factor

Calculated MW:

785 aa, 81 kDa

Observed MW:

95-106 kDa

Purification Method:

Antigen affinity purification

Recommended Dilutions:

IF 1:50-1:500

Excitation/Emission maxima  
wavelengths:

493 nm / 522 nm

## Applications

Tested Applications:

FC (Intra), IF/ICC

Species Specificity:

human, mouse, rat, monkey

Positive Controls:

IF : HepG2 cells,

## Background Information

The transcription factor Sp1 is a C2H2 zinc-finger protein that is involved in the regulation of a wide variety of genes, including housekeeping genes and tumor-developing genes. It is associated with tumor development, growth, and metastasis [PMID: 16209919]. It regulates the expression of a large number of genes involved in a variety of processes such as cell growth, apoptosis, differentiation and immune responses. Besides, it has a role in modulating the cellular response to DNA damage, recruiting SMARCA4/BRG1 on the c-FOS promoter, regulation of FE65 gene expression [PMID:11371615,16332679]. SP1 is detected with MW 95-105 kDa and 65 kDa in this paper (PMID: 10618488).

## Storage

Storage:

Store at -20°C. Avoid exposure to light.

Storage Buffer:

PBS with 50% Glycerol, 0.05% Proclin300, 0.5% BSA, pH 7.3.

Aliquoting is unnecessary for -20°C storage

For technical support and original validation data for this product please contact:

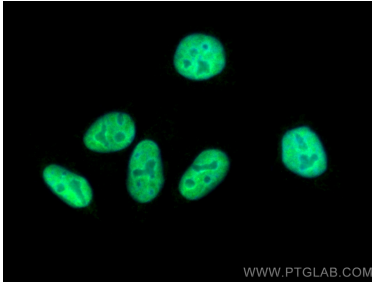
T: 4006900926

E: Proteintech-CN@ptglab.com

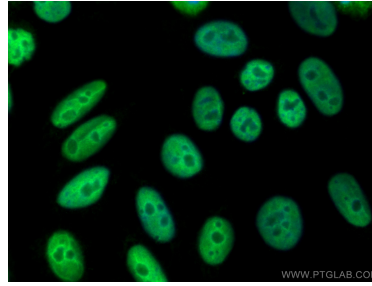
W: ptgcn.com

This product is exclusively available under Proteintech Group brand and is not available to purchase from any other manufacturer.

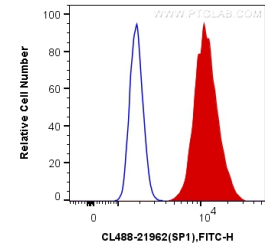
## Selected Validation Data



Immunofluorescent analysis of (4% PFA) fixed HepG2 cells using CoraLite® Plus 488 SP1 antibody (CL488-21962) at dilution of 1:800.



Immunofluorescent analysis of (4% PFA) fixed HepG2 cells using CoraLite® Plus 488 SP1 antibody (CL488-21962) at dilution of 1:200.



1X10<sup>6</sup> HeLa cells were intracellularly stained with 0.4 ug CoraLite® Plus 488 Anti-Human SP1 (CL488-21962) (red), or 0.4 ug Control Antibody. Cells were fixed and permeabilized with Transcription Factor Staining Buffer Kit (PF00011).