

For Research Use Only

# CoraLite® Plus 488-conjugated ROCK1 Polyclonal antibody



Catalog Number: CL488-21850

Featured Product

## Basic Information

Catalog Number:

CL488-21850

Size:

1000 µg/ml

Source:

Rabbit

Isotype:

IgG

Immunogen Catalog Number:

AG16317

GenBank Accession Number:

BC113114

GeneID (NCBI):

6093

UNIPROT ID:

Q13464

Full Name:

Rho-associated, coiled-coil containing  
protein kinase 1

Calculated MW:

1354 aa, 158 kDa

Observed MW:

150-160 kDa

Purification Method:

Antigen affinity purification

Recommended Dilutions:

IF/ICC 1:50-1:500

Excitation/Emission maxima  
wavelengths:

493 nm / 522 nm

## Applications

Tested Applications:

IF/ICC, FC (Intra)

Species Specificity:

human, mouse

Positive Controls:

IF/ICC : HeLa cells,

## Background Information

ROCK1, also named as p160ROCK and NY-REN-35, belongs to the protein kinase superfamily and AGC Ser/Thr protein kinase family. ROCK1 phosphorylates and activates DAPK3, which then regulates myosin light chain phosphatase through phosphorylation of MYPT1 thereby regulating the assembly of the actin cytoskeleton, cell migration, invasiveness of tumor cells, smooth muscle contraction and neurite outgrowth. ROCK1 is required for centromere positioning and centromere-dependent exit from mitosis. It is necessary for apoptotic membrane blebbing. ROCK1 catalyzes the reaction: ATP + a protein = ADP + a phosphoprotein.

## Storage

Storage:

Store at -20°C. Avoid exposure to light.

Storage Buffer:

PBS with 50% Glycerol, 0.05% Proclin300, 0.5% BSA, pH 7.3.

Aliquoting is unnecessary for -20°C storage

For technical support and original validation data for this product please contact:

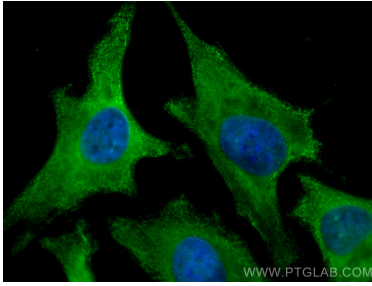
T: 4006900926

E: [Proteintech-CN@ptglab.com](mailto:Proteintech-CN@ptglab.com)

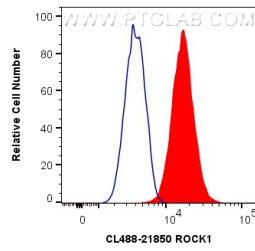
W: [ptgcn.com](http://ptgcn.com)

This product is exclusively available under Proteintech Group brand and is not available to purchase from any other manufacturer.

## Selected Validation Data



Immunofluorescent analysis of (-20°C Methanol) fixed HeLa cells using CoraLite® Plus 488 ROCK1 antibody (CL488-21850) at dilution of 1:200.



1X10<sup>6</sup> HeLa cells were intracellularly stained with 0.8 ug CoraLite® Plus 488 Anti-Human ROCK1 (CL488-21850) (red), or 0.8 ug Isotype Control. Cells were fixed with 4% PFA and permeabilized with Flow Cytometry Perm Buffer (PF00011-C).