

For Research Use Only

CoraLite® Plus 488-conjugated Integrin Beta 4 Polyclonal antibody



Catalog Number:CL488-21738

Featured Product

Basic Information

Catalog Number:

CL488-21738

Size:

1000 µg/ml

Source:

Rabbit

Isotype:

IgG

Immunogen Catalog Number:

AG16450

GenBank Accession Number:

BC126411

GeneID (NCBI):

3691

UNIPROT ID:

P16144

Full Name:

integrin, beta 4

Calculated MW:

1752 aa, 195 kDa

Observed MW:

200-240 kDa

Purification Method:

Antigen affinity purification

Recommended Dilutions:

IF/ICC 1:50-1:500

Excitation/Emission maxima wavelengths:

493 nm / 522 nm

Applications

Tested Applications:

IF/ICC

Species Specificity:

human, mouse, rat

Positive Controls:

IF/ICC : A431 cells,

Background Information

Integrins are cell adhesion receptors that are heterodimers composed of non-covalently associated alpha and beta subunits. Integrin beta-4 is predominantly expressed in squamous epithelial cells, endothelial cells, immature thymocytes, Schwann cells, and fibroblasts of the peripheral nervous system (PMID: 28084395). Integrin beta-4 pairs with alpha-6, and the heterodimeric integrin alpha-6/beta-4 is a receptor for laminin. Integrin alpha-6/beta-4 plays a critical structural role in the hemidesmosome of epithelial cells, and also plays a role in the invasive and metastatic phenotype of various cancers.

Storage

Storage:

Store at -20°C. Avoid exposure to light. Stable for one year after shipment.

Storage Buffer:

PBS with 50% Glycerol, 0.05% Proclin300, 0.5% BSA, pH 7.3.

Aliquoting is unnecessary for -20°C storage

For technical support and original validation data for this product please contact:

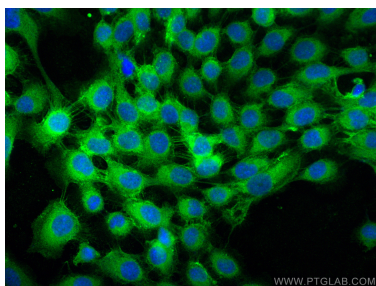
T: 4006900926

E: Proteintech-CN@ptglab.com

W: ptgcn.com

This product is exclusively available under Proteintech Group brand and is not available to purchase from any other manufacturer.

Selected Validation Data



Immunofluorescent analysis of (-20°C Methanol)
fixed A431 cells using Coralite® Plus 488 Integrin
Beta 4 antibody (CL488-21738) at dilution of 1:200.