

For Research Use Only

# CoraLite® Plus 488-conjugated C3/C3b/C3c Polyclonal antibody

Catalog Number: CL488-21337

Featured Product



## Basic Information

Catalog Number:

CL488-21337

Size:

1000 µg/ml

Source:

Rabbit

Isotype:

IgG

Immunogen Catalog Number:

AG15537

GenBank Accession Number:

BC150179

GeneID (NCBI):

718

UNIPROT ID:

P01024

Full Name:

complement component 3

Calculated MW:

1663 aa, 187 kDa

Observed MW:

115 kDa

Purification Method:

Antigen affinity purification

Recommended Dilutions:

IF/ICC 1:50-1:500

Excitation/Emission maxima wavelengths:

493 nm / 522 nm

## Applications

Tested Applications:

IF/ICC

Species Specificity:

human, mouse, rat

Positive Controls:

IF/ICC : HepG2 cells,

## Background Information

The complement system is an important effector that bridges the innate and adaptive immune systems (PMID: 20010915). The third component of complement, C3, plays a central role in activating the complement system. Its processing by C3 convertase is the central reaction in both classical and alternative complement pathways (PMID: 11414361). Human C3, composed of  $\alpha$  and  $\beta$  chains (115 and 75 kDa, respectively), is cleaved into C3a and C3b by C3 convertase. C3b is further cleaved into iC3b, C3c, C3dg, and C3f. This antibody raised against 1314-1663 aa of human C3 protein recognizes C3 alpha chain, C3b alpha' chain, and C3c alpha' chain fragment 2.

## Storage

Storage:

Store at -20°C. Avoid exposure to light. Stable for one year after shipment.

Storage Buffer:

PBS with 50% Glycerol, 0.05% Proclin300, 0.5% BSA, pH 7.3.

Aliquoting is unnecessary for -20°C storage

For technical support and original validation data for this product please contact:

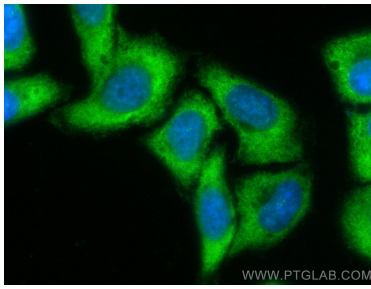
T: 4006900926

E: [Proteintech-CN@ptglab.com](mailto:Proteintech-CN@ptglab.com)

W: [ptgcn.com](http://ptgcn.com)

This product is exclusively available under Proteintech Group brand and is not available to purchase from any other manufacturer.

## Selected Validation Data



Immunofluorescent analysis of (-20°C Ethanol)  
fixed HepG2 cells using CoraLite® Plus 488  
C3/C3b/C3c antibody (CL488-21337) at dilution of  
1:200.