

For Research Use Only



# CoraLite® Plus 488-conjugated ATOH1 Polyclonal antibody

Catalog Number: **CL488-21215** 1 Publications

## Basic Information

Catalog Number: CL488-21215	GenBank Accession Number: BC069594	Purification Method: Antigen affinity purification
Size: 1000 µg/ml	GeneID (NCBI): 474	Excitation/Emission maxima wavelengths: 493 nm / 522 nm
Source: Rabbit	UNIPROT ID: Q92858	
Isotype: IgG	Full Name: atonal homolog 1 (Drosophila)	
Immunogen Catalog Number: AG15615	Calculated MW: 354 aa, 38 kDa	
	Observed MW: 38-40 kDa	

## Applications

Tested Applications:  
FC (Intra)

Cited Applications:  
IF

Species Specificity:  
human, mouse, rat

Cited Species:  
mouse

## Background Information

ATOH1, also named as Protein atonal homolog 1 or BHLHA14, is a 364 amino acid protein, which contains 1 bHLH (basic helix-loop-helix) domain. ATOH1, as a transcriptional regulator in the nucleus activates E box-dependent transcription in collaboration with TCF3/E47, but the activity is completely antagonized by the negative regulator of neurogenesis HES1. ATOH1 plays a role in the differentiation of subsets of neural cells by activating E box-dependent transcription.

## Notable Publications

Author	Pubmed ID	Journal	Application
Wenjin Wu	38472516	J Assoc Res Otolaryngol	IF

## Storage

Storage:  
Store at -20°C. Avoid exposure to light.

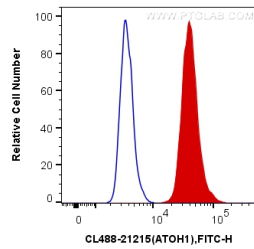
Storage Buffer:  
PBS with 50% Glycerol, 0.05% Proclin300, 0.5% BSA, pH 7.3.

Aliquoting is unnecessary for -20°C storage

For technical support and original validation data for this product please contact:  
T: 4006900926 E: Proteintech-CN@ptglab.com W: ptgcn.com

This product is exclusively available under Proteintech Group brand and is not available to purchase from any other manufacturer.

## Selected Validation Data



1X10<sup>6</sup> HepG2 cells were intracellularly stained with 0.4 ug CoraLite® Plus 488 Anti-Human ATOH1 (CL488-21215) (red), or 0.4 ug Control Antibody. Cells were fixed and permeabilized with Transcription Factor Staining Buffer Kit (PF00011).