

# CoraLite® Plus 488-conjugated PML Polyclonal antibody

Catalog Number: CL488-21041

Featured Product

## Basic Information

## Catalog Number:

CL488-21041

## Size:

1000 µg/ml

## Source:

Rabbit

## Isotype:

IgG

## Immunogen Catalog Number:

AG15377

## GenBank Accession Number:

BC020994

## GeneID (NCBI):

5371

## UNIPROT ID:

P29590

## Full Name:

promyelocytic leukemia

## Calculated MW:

882 aa, 98 kDa

## Observed MW:

120 kDa

## Purification Method:

Antigen affinity purification

## Recommended Dilutions:

IF/ICC 1:50-1:500

## Excitation/Emission maxima wavelengths:

493 nm / 522 nm

## Applications

## Tested Applications:

IF/ICC

## Species Specificity:

human, mouse

## Positive Controls:

IF/ICC : HeLa cells,

## Background Information

PML, also named as MYL, RNF71 and TRIM19, is a member of RBCC/TRIM family of proteins that possess a RING finger domain, B-box, and coiled-coil domain. It functions as tumor suppressor. PML is required for normal, caspase-dependent apoptosis in response to DNA damage, FAS, TNF, or interferons. It plays a role in transcription regulation, DNA damage response, DNA repair and chromatin organization. PML plays a role in processes regulated by retinoic acid, regulation of cell division, terminal differentiation of myeloid precursor cells and differentiation of neural progenitor cells. It regulates PTEN compartmentalization through the inhibition of USP7-mediated deubiquitinylation. A large number of alternative spliced transcripts are synthesized from the PML gene, resulting in a variety of PML proteins ranging in molecular weight from 48-97 kDa (PMID:11704850). And it can be detected as 70-130 kDa or larger due to the modification (especially SUMO) (PMID: 16778193, 22438555).

## Storage

## Storage:

Store at -20°C. Avoid exposure to light. Stable for one year after shipment.

## Storage Buffer:

PBS with 50% Glycerol, 0.05% Proclin300, 0.5% BSA, pH 7.3.

Aliquoting is unnecessary for -20°C storage

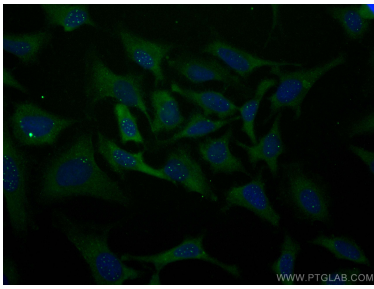
For technical support and original validation data for this product please contact:

T: 4006900926

E: [Proteintech-CN@ptglab.com](mailto:Proteintech-CN@ptglab.com)W: [ptgcn.com](http://ptgcn.com)

This product is exclusively available under Proteintech Group brand and is not available to purchase from any other manufacturer.

## Selected Validation Data



Immunofluorescent analysis of (-20°C Ethanol) fixed HeLa cells using Coralite® Plus 488 PML antibody (CL488-21041) at dilution of 1:200.