

# CoraLite® Plus 488-conjugated PKC Epsilon Polyclonal antibody

Catalog Number: CL488-20877

Featured Product

## Basic Information

## Catalog Number:

CL488-20877

## Size:

500 µg/ml

## Source:

Rabbit

## Isotype:

IgG

## Immunogen Catalog Number:

AG14976

## GenBank Accession Number:

BC109033

## GeneID (NCBI):

5581

## UNIPROT ID:

Q02156

## Full Name:

protein kinase C, epsilon

## Calculated MW:

737 aa, 84 kDa

## Observed MW:

84 kDa

## Purification Method:

Antigen affinity purification

## Recommended Dilutions:

IF/ICC 1:50-1:500

## Excitation/Emission maxima wavelengths:

493 nm / 522 nm

## Applications

## Tested Applications:

IF/ICC, FC (Intra)

## Species Specificity:

human, mouse, rat

## Positive Controls:

IF/ICC : HeLa cells,

## Background Information

PKC Epsilon (Protein kinase C epsilon type) is also named as PKC- $\epsilon$ , PRKCE and PKCE. It belongs to the protein kinase superfamily, AGC Ser/Thr protein kinase family and PKC subfamily. PKC- $\epsilon$ , one of the novel isoforms, as a critical player in membrane mobilization during phagocytosis (PMID: 9069266). KC- $\epsilon$  is tethered to the Golgi through binding of its pseudosubstrate domain to phosphatidylinositol-4-phosphate (PI4P) (PMID: 28539432). PKC- $\epsilon$  traffics on microtubule-associated vesicles from the Golgi to the forming phagosome. As the majority of macrophage PKC- $\epsilon$  is cytosolic, and PKCs translocate from the cytosol to their sites of activity, it predicted that cytosolic PKC- $\epsilon$  concentrated at phagosomes to facilitate membrane addition (PMID: 34622926). Two PKC isozymes of the novel group, PKC- $\epsilon$  and PKC- $\delta$ , have different and sometimes opposite effects. PKC- $\epsilon$  stimulates cell growth and differentiation while PKC- $\delta$  is apoptotic (PMID: 21810427).

## Storage

## Storage:

Store at -20°C. Avoid exposure to light. Stable for one year after shipment.

## Storage Buffer:

PBS with 50% Glycerol, 0.05% Proclin300, 0.5% BSA, pH 7.3.

Aliquoting is unnecessary for -20°C storage

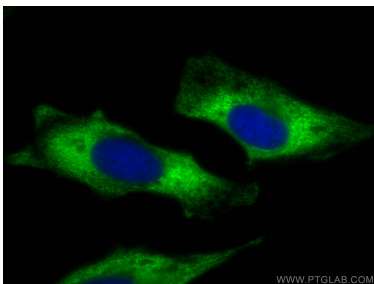
For technical support and original validation data for this product please contact:

T: 4006900926

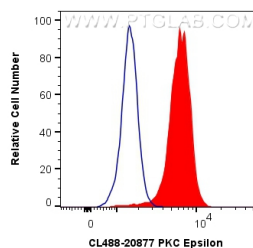
E: [Proteintech-CN@ptglab.com](mailto:Proteintech-CN@ptglab.com)W: [ptgcn.com](http://ptgcn.com)

This product is exclusively available under Proteintech Group brand and is not available to purchase from any other manufacturer.

## Selected Validation Data



Immunofluorescent analysis of (-20°C Ethanol) fixed HeLa cells using CoraLite® Plus 488 PKC Epsilon antibody (CL488-20877) at dilution of 1:200.



1X10<sup>6</sup> Jurkat cells were intracellularly stained with 0.4 ug CoraLite® Plus 488 Anti-Human PKC Epsilon (CL488-20877) (red), or 0.4 ug CoraLite® Plus 488-conjugated Rabbit IgG control Rabbit PolyAb (CL488-30000, Clone: ) (blue). Cells were fixed with 4% PFA and permeabilized with Flow Cytometry Perm Buffer (PF00011-C).