

CoraLite® Plus 488-conjugated TMC1 Polyclonal antibody

Catalog Number: **CL488-20718**

Basic Information

Catalog Number:

CL488-20718

Size:

1000 µg/ml

Source:

Rabbit

Isotype:

IgG

GenBank Accession Number:

NM_138691

GeneID (NCBI):

117531

UNIPROT ID:

Q8TDI8

Full Name:

transmembrane channel-like 1

Calculated MW:

88 kDa

Observed MW:

88 kDa

Purification Method:

Antigen affinity purification

Recommended Dilutions:

IF-P 1:50-1:500

Excitation/Emission maxima wavelengths:

493 nm / 522 nm

Applications

Tested Applications:

IF-P

Species Specificity:

human, mouse, rat

Positive Controls:

IF-P : mouse brain tissue,

Background Information

Transmembrane channel-like protein 1 (TMC1), is an integral membrane protein with six transmembrane domains and cytoplasmically oriented N- and C- termini (PMID: 20672865). Human TMC1 and mouse Tmc1 mRNA expression were detected in human fetal cochlea and inner-ear tissue of postnatal mouse, respectively. TMC1 is required for cochlear hair-cell function (PMID: 11850618). It is a component of hair cell transduction channels and contributes to permeation properties (PMID: 23871232). Mutations in TMC1 gene can cause progressive postlingual hearing loss and profound prelingual deafness (PMID: 11850618). The antibody is specific to TMC1.

Storage

Storage:

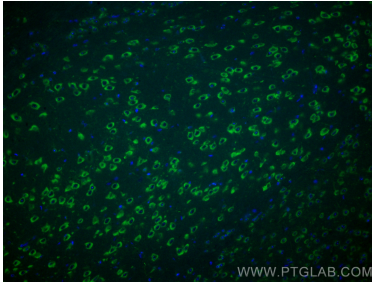
Store at -20°C. Avoid exposure to light. Stable for one year after shipment.

Storage Buffer:

PBS with 50% Glycerol, 0.05% Proclin300, 0.5% BSA, pH 7.3.

Aliquoting is unnecessary for -20°C storage

Selected Validation Data



Immunofluorescent analysis of (4% PFA) fixed paraffin-embedded mouse brain tissue using CoraLite® Plus 488 TMC1 antibody (CL488-20718) at dilution of 1:200. Heat mediated antigen retrieval with Tris-EDTA buffer (pH 9.0).