

For Research Use Only

CoraLite® Plus 488-conjugated Nestin Polyclonal antibody



Catalog Number: **CL488-19483**

Basic Information

Catalog Number:

CL488-19483

Size:

1000 µg/ml

Source:

Rabbit

Isotype:

IgG

GenBank Accession Number:

NM_006617

GeneID (NCBI):

10763

UNIPROT ID:

P48681

Full Name:

nestin

Calculated MW:

177 kDa

Observed MW:

170-180 kDa

Purification Method:

Antigen affinity purification

Recommended Dilutions:

IF-P 1:50-1:500

IF/ICC 1:125-1:500

Excitation/Emission maxima wavelengths:

493 nm / 522 nm

Applications

Tested Applications:

IF/ICC, IF-P

Species Specificity:

human, mouse, rat

Positive Controls:

IF-P : human kidney tissue,

IF/ICC : human dental pulp stem cells, human dental pulp-derived neuronal spheroids

Background Information

Nestin, also named as NES and Nbla00170, is a class VI intermediate filament protein expressed in stem cells of the central nervous system (CNS) but not in mature CNS cells. Its expression is used extensively as a marker for neural lineage cells derived from human embryonic stem (hES) and induced pluripotent stem (iPS) cells. Nestin is also expressed in non-neural stem cell populations such as pancreatic islet progenitors and hematopoietic progenitors.

Storage

Storage:

Store at -20°C. Avoid exposure to light. Stable for one year after shipment.

Storage Buffer:

PBS with 50% Glycerol, 0.05% Proclin300, 0.5% BSA, pH 7.3.

Aliquoting is unnecessary for -20°C storage

For technical support and original validation data for this product please contact:

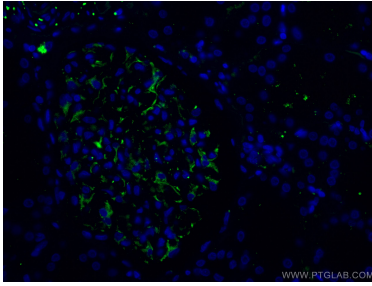
T: 4006900926

E: Proteintech-CN@ptglab.com

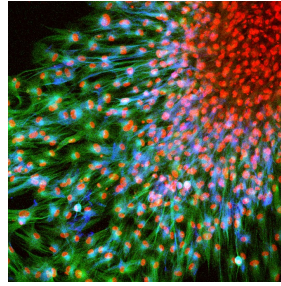
W: ptgcn.com

This product is exclusively available under Proteintech Group brand and is not available to purchase from any other manufacturer.

Selected Validation Data



Immunofluorescent analysis of (4% PFA) fixed human kidney tissue using CoraLite® Plus 488 Nestin antibody (CL488-19483) at dilution of 1:200.



Immunofluorescent analysis of fixed human dental pulp stem cells using CoraLite Plus 488 Nestin antibody (CL488-19483, in green) at dilution 1:250 and CoraLite 594 Iba1 antibody (CL594-10904, in blue) at dilution 1:250. DAPI in red. Image credit: Shuntaro Yamada, PhD, University of Bergen (IG: @stemcell_art)