

For Research Use Only

CoraLite® Plus 488-conjugated TRPC6 Polyclonal antibody

Catalog Number: CL488-18236

Featured Product



Basic Information

Catalog Number:

CL488-18236

Size:

1000 ug/ml

Source:

Rabbit

Isotype:

IgG

Immunogen Catalog Number:

AG12976

GenBank Accession Number:

BC093658

GeneID (NCBI):

7225

UNIPROT ID:

Q9Y210

Full Name:

transient receptor potential cation channel, subfamily C, member 6

Calculated MW:

931 aa, 106 kDa

Observed MW:

100-110 kDa

Purification Method:

Antigen affinity purification

Recommended Dilutions:

IF-P 1:50-1:500

Excitation/Emission maxima wavelengths:

493 nm / 522 nm

Applications

Tested Applications:

IF-P, FC (Intra)

Species Specificity:

human, mouse

Positive Controls:

IF-P: human placenta tissue,

Background Information

Transient receptor potential canonical (TRPC) channels mediate the influx of different types of cations through the cell membrane and are involved in many functions of the organism (PMID: 28508319). The TRPC subfamily consists of seven members, TRPC1, TRPC2, TRPC3, TRPC4, TRPC5, TRPC6, TRPC7 (PMID: 32872338). TRPC6 is a Ca(2+)-permeable non-selective cation channel expressed in most human tissues. TRPC6 has been considered as potential therapeutic targets for malignant glioma treatment (PMID: 35489424).

Storage

Storage:

Store at -20°C. Avoid exposure to light. Stable for one year after shipment.

Storage Buffer:

PBS with 50% Glycerol, 0.05% Proclin300, 0.5% BSA, pH 7.3.

Aliquoting is unnecessary for -20°C storage

For technical support and original validation data for this product please contact:

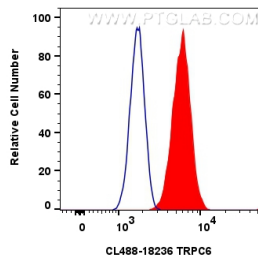
T: 4006900926

E: Proteintech-CN@ptglab.com

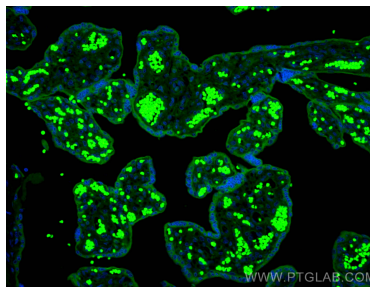
W: ptgcn.com

This product is exclusively available under Proteintech Group brand and is not available to purchase from any other manufacturer.

Selected Validation Data



1x10⁶ A549 cells were intracellularly stained with 0.8 ug CoraLite® Plus 488-conjugated TRPC6 Polyclonal antibody (CL488-18236)(red), or 0.8 ug CoraLite® Plus 488-conjugated Rabbit IgG control Rabbit PolyAb (CL488-30000) (blue). Cells were fixed with 4% PFA and permeabilized with Flow Cytometry Perm Buffer (PF00011-C).



Immunofluorescent analysis of (4% PFA) fixed paraffin-embedded human placenta tissue using CoraLite® Plus 488 TRPC6 antibody (CL488-18236) at dilution of 1:200. Heat mediated antigen retrieval with Tris-EDTA buffer (pH 9.0).