

For Research Use Only

# CoraLite® Plus 488-conjugated CORO1A Polyclonal antibody



Catalog Number: **CL488-17760**

## Basic Information

Catalog Number:

**CL488-17760**

Size:

**1000 µg/ml**

Source:

**Rabbit**

Isotype:

**IgG**

Immunogen Catalog Number:

**AG12139**

GenBank Accession Number:

**BC110374**

GeneID (NCBI):

**11151**

UNIPROT ID:

**P31146**

Full Name:

**coronin, actin binding protein, 1A**

Calculated MW:

**461 aa, 51 kDa**

Observed MW:

**57 kDa**

Purification Method:

**Antigen affinity purification**

Recommended Dilutions:

**IF-P 1:50-1:500**

Excitation/Emission maxima  
wavelengths:

**493 nm / 522 nm**

## Applications

Tested Applications:

**IF-P, FC (Intra)**

Species Specificity:

**human, mouse, rat**

Positive Controls:

**IF-P: human colon tissue, mouse spleen tissue**

## Background Information

### Storage

Storage:

**Store at -20°C. Avoid exposure to light. Stable for one year after shipment.**

Storage Buffer:

**PBS with 50% Glycerol, 0.05% Proclin300, 0.5% BSA, pH 7.3.**

**Aliquoting is unnecessary for -20°C storage**

For technical support and original validation data for this product please contact:

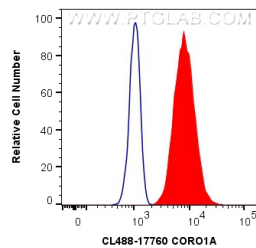
T: 4006900926

E: [Proteintech-CN@ptglab.com](mailto:Proteintech-CN@ptglab.com)

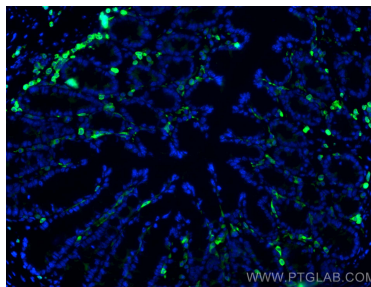
W: [ptgcn.com](http://ptgcn.com)

**This product is exclusively available under Proteintech Group brand and is not available to purchase from any other manufacturer.**

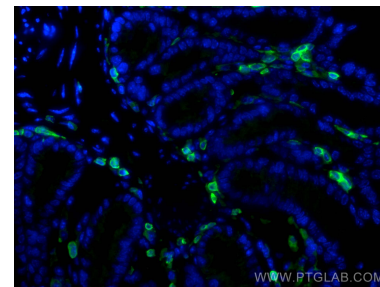
## Selected Validation Data



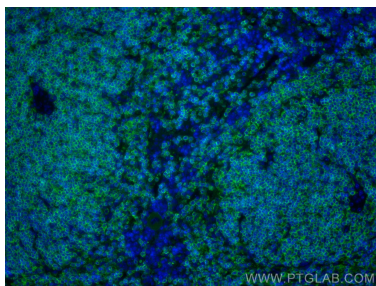
1X10<sup>6</sup> Jurkat cells were intracellularly stained with 0.4 ug CoraLite® Plus 488 Anti-Human CORO1A (CL488-17760) (red), or 0.4 ug Isotype Control. Cells were fixed with 4% PFA and permeabilized with Flow Cytometry Perm Buffer (PF00011-C).



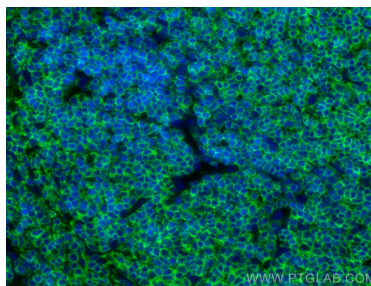
Immunofluorescent analysis of (4% PFA) fixed human colon tissue using CoraLite® Plus 488 CORO1A antibody (CL488-17760) at dilution of 1:200.



Immunofluorescent analysis of (4% PFA) fixed human colon tissue using CoraLite® Plus 488 CORO1A antibody (CL488-17760) at dilution of 1:200.



Immunofluorescent analysis of (4% PFA) fixed mouse spleen tissue using CoraLite® Plus 488 CORO1A antibody (CL488-17760) at dilution of 1:200.



Immunofluorescent analysis of (4% PFA) fixed mouse spleen tissue using CoraLite® Plus 488 CORO1A antibody (CL488-17760) at dilution of 1:200.