

For Research Use Only



CoraLite® Plus 488-conjugated ALDH1L1 Polyclonal antibody

Catalog Number: **CL488-17390**

Basic Information

Catalog Number:

CL488-17390

Size:

1000 µg/ml

Source:

Rabbit

Isotype:

IgG

Immunogen Catalog Number:

AG11285

GenBank Accession Number:

BC027241

GeneID (NCBI):

10840

UNIPROT ID:

O75891

Full Name:

aldehyde dehydrogenase 1 family,
member L1

Calculated MW:

99 kDa

Observed MW:

100 kDa

Purification Method:

Antigen affinity purification

Recommended Dilutions:

IF-P 1:50-1:500

Excitation/Emission maxima
wavelengths:

493 nm / 522 nm

Applications

Tested Applications:

IF-P

Species Specificity:

human, mouse, rat

Positive Controls:

IF-P: mouse brain tissue,

Background Information

Aldehyde dehydrogenase 1 family member L1 (ALDH1L1), belongs to the aldehyde dehydrogenase family of proteins and is responsible for formate oxidation in vivo. Loss of ALDH1L1 is associated with decreased apoptosis, increased cell motility, and cancer progression. ALDH1L1 catalyzes the conversion of 10-formyltetrahydrofolate, nicotinamide adenine dinucleotide phosphate (NADP⁺), and water to tetrahydrofolate, NADPH, and carbon dioxide. ALDH1L1 has some isoforms with MW of 99, 88 and 55 kDa.

Storage

Storage:

Store at -20°C. Avoid exposure to light. Stable for one year after shipment.

Storage Buffer:

PBS with 50% Glycerol, 0.05% Proclin300, 0.5% BSA, pH 7.3.

Aliquoting is unnecessary for -20°C storage

For technical support and original validation data for this product please contact:

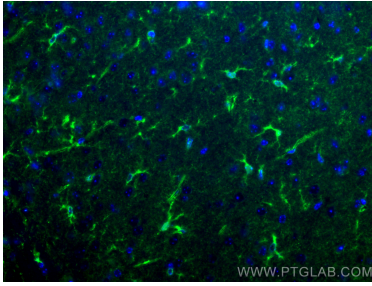
T: 4006900926

E: Proteintech-CN@ptglab.com

W: ptgcn.com

This product is exclusively available under Proteintech Group brand and is not available to purchase from any other manufacturer.

Selected Validation Data



Immunofluorescent analysis of (4% PFA) fixed paraffin-embedded mouse brain tissue using CoraLite® Plus 488 ALDH1L1 antibody (CL488-17390) at dilution of 1:200. Heat mediated antigen retrieval with Tris-EDTA buffer (pH 9.0).