

For Research Use Only

# CoraLite® Plus 488-conjugated EXD1 Polyclonal antibody

Catalog Number: CL488-17313



## Basic Information

Catalog Number:

CL488-17313

Size:

1000 µg/ml

Source:

Rabbit

Isotype:

IgG

Immunogen Catalog Number:

AG11282

GenBank Accession Number:

BC030628

GeneID (NCBI):

161829

UNIPROT ID:

Q8NHP7

Full Name:

exonuclease 3'-5' domain containing

1

Calculated MW:

514 aa, 58 kDa

Observed MW:

36 kDa, 58 kDa, 75 kDa

Purification Method:

Antigen affinity purification

Recommended Dilutions:

IF/ICC 1:50-1:500

Excitation/Emission maxima wavelengths:

493 nm / 522 nm

## Applications

Tested Applications:

IF/ICC

Species Specificity:

human

Positive Controls:

IF/ICC : HeLa cells,

## Background Information

EXD1, also named as EXDL1, has three isoforms with MW 58 kDa, 36 kDa and 65 kDa. This antibody can recognize all these three isoforms.

## Storage

Storage:

Store at -20°C. Avoid exposure to light. Stable for one year after shipment.

Storage Buffer:

PBS with 50% Glycerol, 0.05% Proclin300, 0.5% BSA, pH 7.3.

Aliquoting is unnecessary for -20°C storage

For technical support and original validation data for this product please contact:

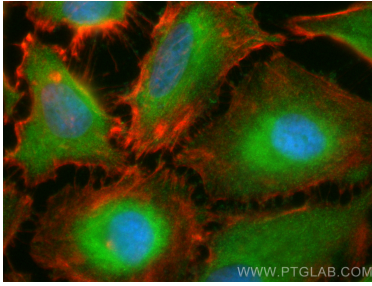
T: 4006900926

E: [Proteintech-CN@ptglab.com](mailto:Proteintech-CN@ptglab.com)

W: [ptgcn.com](http://ptgcn.com)

This product is exclusively available under Proteintech Group brand and is not available to purchase from any other manufacturer.

## Selected Validation Data



Immunofluorescent analysis of (-20°C Ethanol) fixed HeLa cells using Coralite® Plus 488 EXD1 antibody (CL488-17313) at dilution of 1:200, CL594-Phalloidin (red).