

# CoraLite® Plus 488-conjugated CD5L Polyclonal antibody

Catalog Number: **CL488-17224**

## Basic Information

**Catalog Number:**

CL488-17224

**Size:**

1000 µg/ml

**Source:**

Rabbit

**Isotype:**

IgG

**Immunogen Catalog Number:**

AG11062

**GenBank Accession Number:**

BC033586

**GeneID (NCBI):**

922

**UNIPROT ID:**

O43866

**Full Name:**

CD5 molecule-like

**Calculated MW:**

347 aa, 38 kDa

**Observed MW:**

40 kDa

**Purification Method:**

Antigen Affinity Purified

**Recommended Dilutions:**

IF/ICC 1:50-1:500

**Excitation/Emission maxima  
wavelengths:**

493 nm / 522 nm

## Applications

**Tested Applications:**

IF/ICC

**Species Specificity:**

human

**Positive Controls:**

IF/ICC : HepG2 cells,

## Background Information

CD5 molecule-like (CD5L), also known as apoptosis inhibitor expressed by macrophages (AIM), SP-alpha, apoptosis inhibitor 6 (API6), is a member of the scavenger receptor cysteine-rich (SRCR) family of proteins (PMID: 9045627; 9892623). CD5L is a soluble protein mainly secreted mostly by macrophages in lymphoid and inflamed tissues (PMID: 15009805). It contains three SRCR domains, each approximately 100 amino acids in length with sialic acid content at a potential region of O-linked glycosylation between SRCR domains 1 and 2. CD5L is involved in different processes such as metabolism, infection and autophagy (PMID: 33920819).

## Storage

**Storage:**

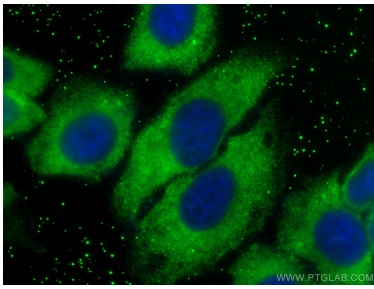
Store at -20°C. Avoid exposure to light. Stable for one year after shipment.

**Storage Buffer:**

PBS with 50% Glycerol, 0.05% Proclin300, 0.5% BSA, pH 7.3.

Aliquoting is unnecessary for -20°C storage

## Selected Validation Data



Immunofluorescent analysis of (-20°C Ethanol) fixed HepG2 cells using CoraLite® Plus 488 CD5L antibody (CL488-17224) at dilution of 1:100.