

For Research Use Only

CoraLite® Plus 488-conjugated Syntabulin Polyclonal antibody

Catalog Number: **CL488-16972**



Basic Information

Catalog Number:

CL488-16972

Size:

1000 µg/ml

Source:

Rabbit

Isotype:

IgG

Immunogen Catalog Number:

AG9344

GenBank Accession Number:

BC012082

GeneID (NCBI):

55638

UNIPROT ID:

Q9NX95

Full Name:

Golgi-localized protein

Calculated MW:

662 aa, 72 kDa

Observed MW:

90 kDa

Purification Method:

Antigen affinity purification

Recommended Dilutions:

IF-P 1:50-1:500

Excitation/Emission maxima wavelengths:

493 nm / 522 nm

Applications

Tested Applications:

IF-P

Species Specificity:

human, mouse, rat

Positive Controls:

IF-P : rat brain tissue,

Background Information

Storage

Storage:

Store at -20°C. Avoid exposure to light. Stable for one year after shipment.

Storage Buffer:

PBS with 50% Glycerol, 0.05% Proclin300, 0.5% BSA, pH 7.3.

Aliquoting is unnecessary for -20°C storage

For technical support and original validation data for this product please contact:

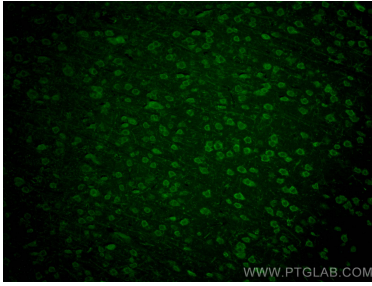
T: 4006900926

E: Proteintech-CN@ptglab.com

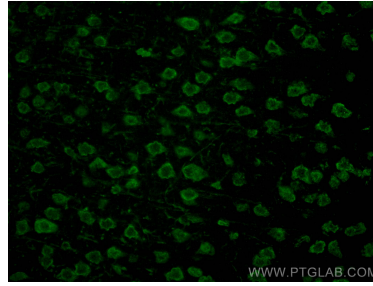
W: ptgcn.com

This product is exclusively available under Proteintech Group brand and is not available to purchase from any other manufacturer.

Selected Validation Data



Immunofluorescent analysis of (4% PFA) fixed paraffin-embedded rat brain tissue using CoraLite® Plus 488 Syntabulin antibody (CL488-16972) at dilution of 1:200. Heat mediated antigen retrieval with Tris-EDTA buffer (pH 9.0).



Immunofluorescent analysis of (4% PFA) fixed paraffin-embedded rat brain tissue using CoraLite® Plus 488 Syntabulin antibody (CL488-16972) at dilution of 1:200. Heat mediated antigen retrieval with Tris-EDTA buffer (pH 9.0).