

For Research Use Only



# CoraLite® Plus 488-conjugated Apolipoprotein A II/APOA2 Polyclonal antibody

Catalog Number: **CL488-16845**

## Basic Information

<b>Catalog Number:</b> CL488-16845	<b>GenBank Accession Number:</b> BC005282	<b>Purification Method:</b> Antigen affinity purification
<b>Concentration:</b> 1000 ug/ml	<b>GeneID (NCBI):</b> 336	<b>Recommended Dilutions:</b> IF/ICC 1:50-1:500
<b>Source:</b> Rabbit	<b>UNIPROT ID:</b> P02652	<b>Excitation/Emission maxima wavelengths:</b> 493 nm / 522 nm
<b>Isotype:</b> IgG	<b>Full Name:</b> apolipoprotein A-II	
<b>Immunogen Catalog Number:</b> AG9863	<b>Calculated MW:</b> 100 aa, 11 kDa	
	<b>Observed MW:</b> 7-9 kDa (monomer), 15 kDa (dimer)	

## Applications

<b>Tested Applications:</b> IF/ICC	<b>Positive Controls:</b> IF/ICC : HepG2 cells,
<b>Species Specificity:</b> human	

## Background Information

Apolipoprotein A-II (APOA2) is a major component of high density lipoprotein (HDL) and it plays an important role in directing the fate of lipid metabolism among HDL. It is primarily synthesized by liver. The predicted MW of ApoA2 is 11 kDa, while the mature form is smaller (7-10 kDa) since the signal peptide was cleaved. In humans, most of circulating apoA2 exist as dimer. Five types of APOA2 dimer exist: homodimer apoA2-ATQ/ATQ, heterodimer apoA2-ATQ/AT, homodimer apoA2-AT/AT, apoA2-AT/A, and apoA2-A/A. ApoA2 isoforms are considered to be some of the most promising serum/plasma biomarkers for aiding the early detection of pancreatic cancer. (PMID: 29081441, 29481802)

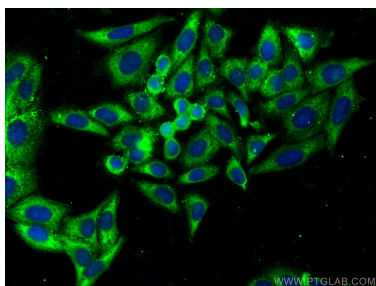
## Storage

**Storage:**  
Store at -20°C. Avoid exposure to light. Stable for one year after shipment.  
**Storage Buffer:**  
PBS with 50% Glycerol, 0.05% Proclin300, 0.5% BSA, pH 7.3.  
Aliquoting is unnecessary for -20°C storage

For technical support and original validation data for this product please contact:  
T: 4006900926 E: [Proteintech-CN@ptglab.com](mailto:Proteintech-CN@ptglab.com) W: [ptgcn.com](http://ptgcn.com)

This product is exclusively available under Proteintech Group brand and is not available to purchase from any other manufacturer.

## Selected Validation Data



Immunofluorescent analysis of (-20°C Ethanol) fixed HepG2 cells using CoraLite® Plus 488 Apolipoprotein A II antibody (CL488-16845) at dilution of 1:200.