

For Research Use Only

# CoraLite® Plus 488-conjugated p130Cas / BCAR1 Polyclonal antibody

Catalog Number: CL488-16815



## Basic Information

Catalog Number:

CL488-16815

Source:

Rabbit

Isotype:

IgG

Immunogen Catalog Number:

AG10354

GenBank Accession Number:

BC062556

GeneID (NCBI):

9564

UNIPROT ID:

P56945

Full Name:

breast cancer anti-estrogen resistance

1

Calculated MW:

870 aa, 93 kDa

Observed MW:

116 kDa

Purification Method:

Antigen affinity purification

Recommended Dilutions:

IF/ICC: 1:50-1:500

FC (Intra): 0.40 ug per 10<sup>6</sup> cells in a  
100 µl suspension

Excitation/Emission maxima  
wavelengths:

493 nm / 522 nm

## Applications

Tested Applications:

IF/ICC, FC (Intra)

Species Specificity:

human, mouse, rat

Positive Controls:

IF/ICC : HeLa cells,

FC (Intra) : A431 cells,

## Background Information

### Storage

Storage:

Store at -20°C. Avoid exposure to light. Stable for one year after shipment.

Storage Buffer:

PBS with 50% glycerol, 0.05% Proclin300, 0.5% BSA, pH7.3

Aliquoting is unnecessary for -20°C storage

For technical support and original validation data for this product please contact:

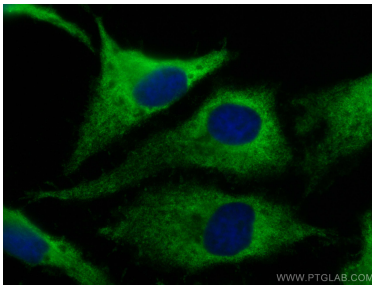
T: 4006900926

E: [Proteintech-CN@ptglab.com](mailto:Proteintech-CN@ptglab.com)

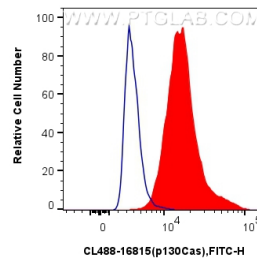
W: [ptgcn.com](http://ptgcn.com)

This product is exclusively available under Proteintech Group brand and is not available to purchase from any other manufacturer.

## Selected Validation Data



Immunofluorescent analysis of (-20°C Methanol) fixed HeLa cells using Coralite® Plus 488 p130Cas / BCAR1 antibody (CL488-16815) at dilution of 1:200.



1X10<sup>6</sup> A431 cells were intracellularly stained with 0.4 ug Coralite® Plus 488 Anti-Human p130Cas (CL488-16815) (red), or 0.4 ug Coralite® Plus 488-conjugated Rabbit IgG control Rabbit PolyAb (CL488-30000, Clone: ) (blue). Cells were fixed with 4% PFA and permeabilized with Flow Cytometry Perm Buffer.