

For Research Use Only

CoraLite® Plus 488-conjugated METTL5 Polyclonal antibody



Catalog Number: CL488-16791

Featured Product

Basic Information

Catalog Number:

CL488-16791

Size:

1000 µg/ml

Source:

Rabbit

Isotype:

IgG

Immunogen Catalog Number:

AG10232

GenBank Accession Number:

BC000921

GeneID (NCBI):

29081

UNIPROT ID:

Q9NRN9

Full Name:

methyltransferase like 5

Calculated MW:

209 aa, 24 kDa

Observed MW:

24-27 kDa

Purification Method:

Antigen affinity purification

Recommended Dilutions:

IF 1:50-1:500

Excitation/Emission maxima

wavelengths:

493 nm / 522 nm

Applications

Tested Applications:

IF/ICC

Species Specificity:

human

Positive Controls:

IF : HepG2 cells,

Background Information

METTL5 is a member of the METTL family of S-adenosyl-methionine-dependent methyltransferases that adds m6A to a specific site, nucleotide A-1832 of 18S rRNA, hereafter referred to as m6A1832. METTL5 is localized in the nucleolus and cytoplasm.

Storage

Storage:

Store at -20°C. Avoid exposure to light. Stable for one year after shipment.

Storage Buffer:

PBS with 50% Glycerol, 0.05% Proclin300, 0.5% BSA, pH 7.3.

Aliquoting is unnecessary for -20°C storage

For technical support and original validation data for this product please contact:

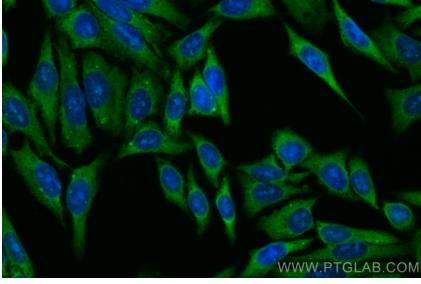
T: 4006900926

E: Proteintech-CN@ptglab.com

W: ptgcn.com

This product is exclusively available under Proteintech Group brand and is not available to purchase from any other manufacturer.

Selected Validation Data



Immunofluorescent analysis of (-20°C Ethanol) fixed HepG2 cells using CoraLite® Plus 488 METTL5 antibody (CL488-16791) at dilution of 1:200.