

For Research Use Only



# CoraLite® Plus 488-conjugated ARPC5 Polyclonal antibody

Catalog Number: **CL488-16717**

## Basic Information

Catalog Number:

CL488-16717

Size:

1000 µg/ml

Source:

Rabbit

Isotype:

IgG

Immunogen Catalog Number:

AG10144

GenBank Accession Number:

BC057237

GeneID (NCBI):

10092

UNIPROT ID:

O15511

Full Name:

actin related protein 2/3 complex,  
subunit 5, 16kDa

Calculated MW:

154 aa, 17 kDa

Observed MW:

18-20 kDa

Purification Method:

Antigen affinity purification

Recommended Dilutions:

IF/ICC 1:50-1:500

Excitation/Emission maxima  
wavelengths:

493 nm / 522 nm

## Applications

Tested Applications:

IF/ICC

Species Specificity:

human, mouse, rat

Positive Controls:

IF/ICC : Neuro-2a cells,

## Background Information

### Storage

Storage:

Store at -20°C. Avoid exposure to light. Stable for one year after shipment.

Storage Buffer:

PBS with 50% Glycerol, 0.05% Proclin300, 0.5% BSA, pH 7.3.

Aliquoting is unnecessary for -20°C storage

For technical support and original validation data for this product please contact:

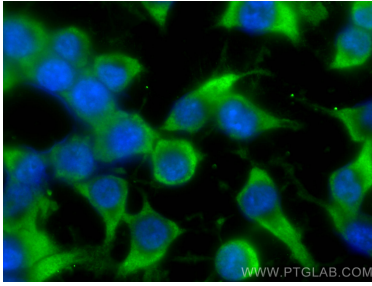
T: 4006900926

E: [Proteintech-CN@ptglab.com](mailto:Proteintech-CN@ptglab.com)

W: [ptgcn.com](http://ptgcn.com)

This product is exclusively available under Proteintech Group brand and is not available to purchase from any other manufacturer.

## Selected Validation Data



Immunofluorescent analysis of (-20°C Ethanol)  
fixed Neuro-2a cells using CoraLite® Plus 488  
ARPC5 antibody (CL488-16717) at dilution of 1:200.