

For Research Use Only



# CoraLite® Plus 488-conjugated ATP5I Polyclonal antibody

Catalog Number: **CL488-16483**

## Basic Information

<b>Catalog Number:</b> CL488-16483	<b>GenBank Accession Number:</b> BC003679	<b>Purification Method:</b> Antigen affinity purification
<b>Size:</b> 500 µg/ml	<b>GeneID (NCBI):</b> 521	<b>Recommended Dilutions:</b> IF/ICC 1:50-1:500
<b>Source:</b> Rabbit	<b>UNIPROT ID:</b> P56385	<b>Excitation/Emission maxima wavelengths:</b> 493 nm / 522 nm
<b>Isotype:</b> IgG	<b>Full Name:</b> ATP synthase, H <sup>+</sup> transporting, mitochondrial F <sub>0</sub> complex, subunit E	
<b>Immunogen Catalog Number:</b> AG9605	<b>Calculated MW:</b> 69 aa, 8 kDa	
	<b>Observed MW:</b> 8 kDa	

## Applications

<b>Tested Applications:</b> IF/ICC	<b>Positive Controls:</b> IF/ICC : HeLa cells,
<b>Species Specificity:</b> human, mouse, rat	

## Background Information

ATP5I (ATP synthase subunit e) is also named as ATP5K and belongs to the ATPase e subunit family. The ATP5I gene encodes the e subunit of the mitochondrial ATP synthase F<sub>0</sub> complex. Mitochondrial membrane ATP synthase (F<sub>1</sub>F<sub>0</sub> ATP synthase or Complex V) produces ATP from ADP in the presence of a proton gradient across the membrane which is generated by electron transport complexes of the respiratory chain. Antisense ATP5I in a human HCC cell line inhibited cell growth suggesting that ATP5I acts through the MAP kinase pathway (PMID:11939412).

## Storage

**Storage:**  
Store at -20°C. Avoid exposure to light. Stable for one year after shipment.  
**Storage Buffer:**  
PBS with 50% Glycerol, 0.05% Proclin300, 0.5% BSA, pH 7.3.  
**Aliquoting is unnecessary for -20°C storage**

For technical support and original validation data for this product please contact:

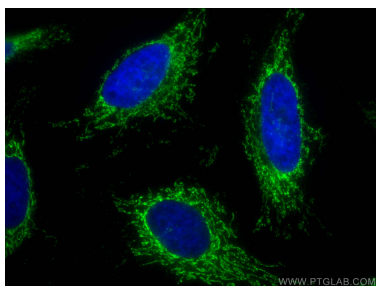
T: 4006900926

E: [Proteintech-CN@ptglab.com](mailto:Proteintech-CN@ptglab.com)

W: [ptgcn.com](http://ptgcn.com)

**This product is exclusively available under Proteintech Group brand and is not available to purchase from any other manufacturer.**

## Selected Validation Data



Immunofluorescent analysis of (4% PFA) fixed HeLa cells using CoraLite® Plus 488 ATP5I antibody (CL488-16483) at dilution of 1:200.