

For Research Use Only

CoraLite® Plus 488-conjugated CEP70 Polyclonal antibody

Catalog Number: CL488-16280



Basic Information

Catalog Number:

CL488-16280

Concentration:

1000 µg/ml

Source:

Rabbit

Isotype:

IgG

Immunogen Catalog Number:

AG9365

GenBank Accession Number:

BC016050

GeneID (NCBI):

80321

UNIPROT ID:

Q8NHQ1

Full Name:

centrosomal protein 70kDa

Calculated MW:

597 aa, 70 kDa

Observed MW:

25-28 kDa

Purification Method:

Antigen affinity purification

Recommended Dilutions:

IF/ICC 1:50-1:500

Excitation/Emission maxima wavelengths:

493 nm / 522 nm

Applications

Tested Applications:

IF/ICC

Species Specificity:

human

Positive Controls:

IF/ICC : MCF-7 cells,

Background Information

CEP70, also named as Centrosomal protein of 70 kDa, is a 597 amino acid protein, which directly interacts with tubulin-gamma; this interaction determines centrosomal localization. CEP70 plays a role in the organization of both preexisting and nascent microtubules in interphase cells. During mitosis, CEP70 is required for the organization and orientation of the mitotic spindle. CEP70 exists some isoforms with MW 70, 67, 65 and 25 kDa.

Storage

Storage:

Store at -20°C. Avoid exposure to light. Stable for one year after shipment.

Storage Buffer:

PBS with 50% Glycerol, 0.05% Proclin300, 0.5% BSA, pH 7.3.

Aliquoting is unnecessary for -20°C storage

For technical support and original validation data for this product please contact:

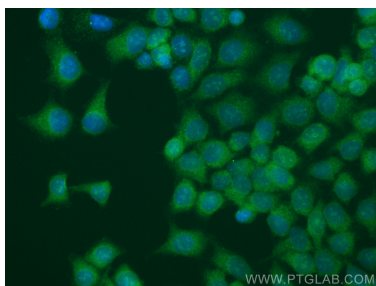
T: 4006900926

E: Proteintech-CN@ptglab.com

W: ptgcn.com

This product is exclusively available under Proteintech Group brand and is not available to purchase from any other manufacturer.

Selected Validation Data



Immunofluorescent analysis of (-20°C Methanol) fixed MCF-7 cells using CoraLite® Plus 488 CEP70 antibody (CL488-16280) at dilution of 1:200.