

# CoraLite® Plus 488-conjugated Glucagon Polyclonal antibody

Catalog Number: **CL488-15954**

## Basic Information

**Catalog Number:**

CL488-15954

**Size:**

1000 µg/ml

**Source:**

Rabbit

**Isotype:**

IgG

**Immunogen Catalog Number:**

AG8677

**GenBank Accession Number:**

BC005278

**GeneID (NCBI):**

2641

**UNIPROT ID:**

P01275

**Full Name:**

glucagon

**Calculated MW:**

180 aa, 21 kDa

**Purification Method:**

Antigen affinity purification

**Recommended Dilutions:**

IF-P 1:50-1:500

**Excitation/Emission maxima wavelengths:**

493 nm / 522 nm

## Applications

**Tested Applications:**

IF-P

**Species Specificity:**

human, mouse, rat

**Positive Controls:**

IF-P : mouse pancreas tissue,

## Background Information

Glucagon is a 29-amino acid peptide hormone secreted from the pancreatic alpha cells with a powerful stimulatory effect on hepatic glucose production acting to increase plasma glucose levels. Glucagon is best known as the counter-regulatory hormone to insulin, and normal glucose homeostasis depends largely on the balanced secretion of insulin and glucagon from the pancreatic beta and alpha cells, respectively. The regulation of glucose metabolism by glucagon is mediated by its direct action on the peripheral tissues such as the liver and also by the brain. Glucagon is also released postprandially in a transient manner, which was shown to be involved in inhibition of food intake via reduction of meal size.

## Storage

**Storage:**

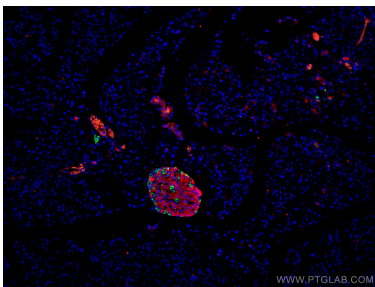
Store at -20°C. Avoid exposure to light.

**Storage Buffer:**

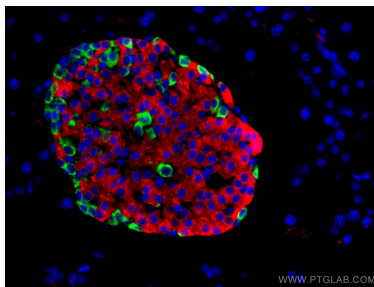
PBS with 50% Glycerol, 0.05% Proclin300, 0.5% BSA, pH 7.3.

Aliquoting is unnecessary for -20°C storage

## Selected Validation Data



Immunofluorescent analysis of (4% PFA) fixed mouse pancreas tissue using CoraLite® Plus 488 Glucagon antibody (CL488-15954) at dilution of 1:200, CoraLite®594 INS antibody (CL594-15848, red).



Immunofluorescent analysis of (4% PFA) fixed mouse pancreas tissue using CoraLite® Plus 488 Glucagon antibody (CL488-15954) at dilution of 1:200, CoraLite®594 INS antibody (CL594-15848, red).