

For Research Use Only

# CoraLite® Plus 488-conjugated CTP synthase Polyclonal antibody

Catalog Number: CL488-15914

Featured Product



## Basic Information

Catalog Number:

CL488-15914

Source:

Rabbit

Isotype:

IgG

Immunogen Catalog Number:

AG8707

GenBank Accession Number:

BC009408

GeneID (NCBI):

1503

UNIPROT ID:

P17812

Full Name:

CTP synthase

Calculated MW:

591 aa, 67 kDa

Observed MW:

67 kDa

Purification Method:

Antigen affinity purification

Recommended Dilutions:

IF/ICC: 1:50-1:500

FC (Intra): 0.40 ug per 10<sup>6</sup> cells in a 100 µl suspension

Excitation/Emission maxima wavelengths:

493 nm / 522 nm

## Applications

Tested Applications:

IF/ICC, FC (Intra)

Species Specificity:

human

Positive Controls:

IF/ICC : HepG2 cells,

FC (Intra) : HepG2 cells,

## Background Information

CTP synthase (CTPS) is also named as CTPS1 and belongs to the CTP synthase family. It catalyses the ATP-dependent formation of CTP from UTP using either L-glutamine or NH<sub>3</sub> as the nitrogen source (PMID:12752439). It is important in the biosynthesis of phospholipids and nucleic acids, and plays a key role in cell growth, development, and tumorigenesis (PMID:8813694). CTP synthetase exists as a dimer in the absence of its substrates ATP and UTP, but in the presence of saturating concentrations of these substrates the enzyme exists as a tetramer. (PMID:18439916)

## Storage

Storage:

Store at -20°C. Avoid exposure to light. Stable for one year after shipment.

Storage Buffer:

PBS with 50% glycerol, 0.05% Proclin300, 0.5% BSA, pH7.3

Aliquoting is unnecessary for -20°C storage

For technical support and original validation data for this product please contact:

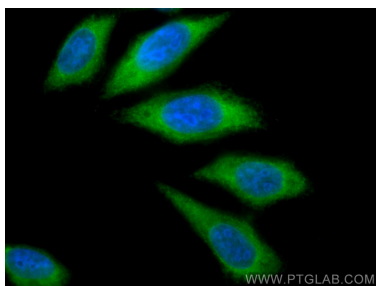
T: 4006900926

E: [Proteintech-CN@ptglab.com](mailto:Proteintech-CN@ptglab.com)

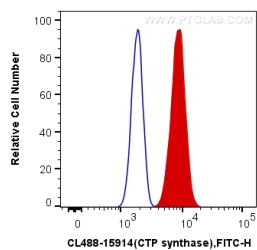
W: [ptgcn.com](http://ptgcn.com)

This product is exclusively available under Proteintech Group brand and is not available to purchase from any other manufacturer.

## Selected Validation Data



Immunofluorescent analysis of (-20°C Methanol) fixed HepG2 cells using CoraLite® Plus 488 CTP synthase antibody (CL488-15914) at dilution of 1:200.



1X10<sup>6</sup> HepG2 cells were intracellularly stained with 0.4 ug CoraLite® Plus 488 Anti-Human CTP synthase (CL488-15914) (red), or 0.4 ug Control Antibody. Cells were fixed with 4% PFA and permeabilized with Flow Cytometry Perm Buffer.