

For Research Use Only



# CoraLite® Plus 488-conjugated Glycophorin A/CD235a Polyclonal antibody

Catalog Number: **CL488-15874**

## Basic Information

Catalog Number: CL488-15874	GenBank Accession Number: BC005319	Purification Method: Antigen affinity purification
Concentration: 1000 ug/ml	GeneID (NCBI): 2993	Recommended Dilutions: IF-P 1:50-1:500
Source: Rabbit	UNIPROT ID: P02724	Excitation/Emission maxima wavelengths: 493 nm / 522 nm
Isotype: IgG	Full Name: glycophorin A (MNS blood group)	
Immunogen Catalog Number: AG8635	Calculated MW: 150 aa, 16 kDa	
	Observed MW: 36-38 kDa	

## Applications

Tested Applications: IF-P	Positive Controls: IF-P : human placenta tissue,
Species Specificity: human	

## Background Information

Glycophorin A (GYPA) is the major transmembrane sialoglycoprotein in erythrocytes. It is a dimeric type I transmembrane protein carrying 15 closely clustered O-linked tetrasaccharides capped with sialic acid/N-acetylneuraminic acid (Neu5Ac). This 36 kDa protein represents the major sialoglycoprotein of the red blood cell membrane displaying about one million copies per cell. (PMID: 9490702)

## Storage

**Storage:**  
Store at -20°C. Avoid exposure to light. Stable for one year after shipment.  
**Storage Buffer:**  
PBS with 50% Glycerol, 0.05% Proclin300, 0.5% BSA, pH 7.3.  
**Aliquoting is unnecessary for -20°C storage**

For technical support and original validation data for this product please contact:

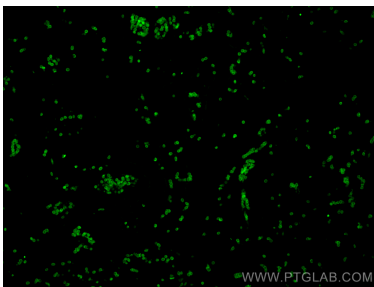
T: 4006900926

E: [Proteintech-CN@ptglab.com](mailto:Proteintech-CN@ptglab.com)

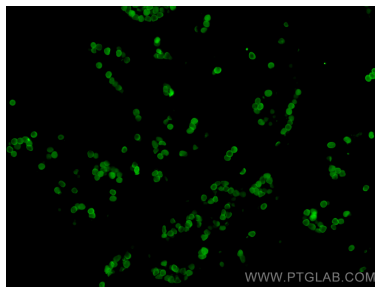
W: [ptgcn.com](http://ptgcn.com)

**This product is exclusively available under Proteintech Group brand and is not available to purchase from any other manufacturer.**

## Selected Validation Data



Immunofluorescent analysis of (4% PFA) fixed paraffin-embedded human placenta tissue using CoraLite® Plus 488 Glycophorin A antibody (CL488-15874) at dilution of 1:200. Heat mediated antigen retrieval with Tris-EDTA buffer (pH 9.0).



Immunofluorescent analysis of (4% PFA) fixed paraffin-embedded human placenta tissue using CoraLite® Plus 488 Glycophorin A antibody (CL488-15874) at dilution of 1:200. Heat mediated antigen retrieval with Tris-EDTA buffer (pH 9.0).