

For Research Use Only

# CoraLite® Plus 488-conjugated ALDH3A1 Polyclonal antibody



Catalog Number: CL488-15578

Featured Product

## Basic Information

Catalog Number:

CL488-15578

Size:

1000 µg/ml

Source:

Rabbit

Isotype:

IgG

Immunogen Catalog Number:

AG7977

GenBank Accession Number:

BC004370

GeneID (NCBI):

218

UNIPROT ID:

P30838

Full Name:

aldehyde dehydrogenase 3 family,  
memberA1

Calculated MW:

50 kDa

Observed MW:

48 kDa

Purification Method:

Antigen affinity purification

Recommended Dilutions:

IF 1:50-1:500

Excitation/Emission maxima  
wavelengths:

493 nm / 522 nm

## Applications

Tested Applications:

IF/ICC

Species Specificity:

human, mouse, rat

Positive Controls:

IF : HEK-293 cells,

## Background Information

ALDH3A1 (Aldehyde dehydrogenase, dimeric NADP-preferring), also named as ALDH3, is a member of the ALDH superfamily, which consists of NAD(P)<sup>+</sup>-dependent enzymes that catalyse the oxidation of a wide variety of endogenously produced and exogenous aldehydes to their corresponding acids. It is expressed at high concentrations in the mammalian cornea and it is believed that it protects this vital tissue and the rest of the eye against UVlight-induced damage. (PMID:12943535). It can exist as a dimer (PMID:16919242).

## Storage

Storage:

Store at -20°C. Avoid exposure to light. Stable for one year after shipment.

Storage Buffer:

PBS with 50% Glycerol, 0.05% Proclin300, 0.5% BSA, pH 7.3.

Aliquoting is unnecessary for -20°C storage

For technical support and original validation data for this product please contact:

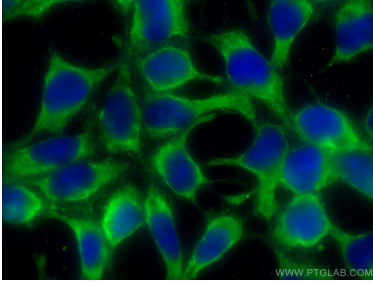
T: 4006900926

E: [Proteintech-CN@ptglab.com](mailto:Proteintech-CN@ptglab.com)

W: [ptgcn.com](http://ptgcn.com)

This product is exclusively available under Proteintech Group brand and is not available to purchase from any other manufacturer.

## Selected Validation Data



Immunofluorescent analysis of (-20°C Ethanol) fixed HEK-293 cells using CoraLite® Plus 488 ALDH3A1 antibody (CL488-15578) at dilution of 1:200.