

For Research Use Only



# CoraLite® Plus 488-conjugated Pancreatic Polypeptide Polyclonal antibody

Catalog Number: ~~CL488-15493~~

## Basic Information

Catalog Number: CL488-15493	GenBank Accession Number: BC032225	Purification Method: Antigen affinity purification
Size: 1000 µg/ml	GeneID (NCBI): 5539	Recommended Dilutions: IF/ICC 1:50-1:500
Source: Rabbit	UNIPROT ID: P01298	Excitation/Emission maxima wavelengths: 493 nm / 522 nm
Isotype: IgG	Full Name: pancreatic polypeptide	
Immunogen Catalog Number: AG7886	Calculated MW: 10 kDa	

## Applications

Tested Applications: IF/ICC	Positive Controls: IF/ICC : HepG2 cells,
Species Specificity: human, mouse, rat	

## Background Information

### Storage

**Storage:**  
Store at -20°C. Avoid exposure to light. Stable for one year after shipment.

**Storage Buffer:**  
PBS with 50% Glycerol, 0.05% Proclin300, 0.5% BSA, pH 7.3.

Aliquoting is unnecessary for -20°C storage

For technical support and original validation data for this product please contact:

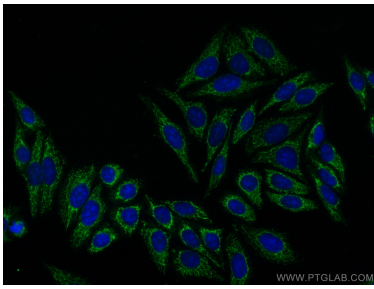
T: 4006900926

E: [Proteintech-CN@ptglab.com](mailto:Proteintech-CN@ptglab.com)

W: [ptgcn.com](http://ptgcn.com)

This product is exclusively available under Proteintech Group brand and is not available to purchase from any other manufacturer.

## Selected Validation Data



Immunofluorescent analysis of (-20°C Ethanol)  
fixed HepG2 cells using Coralite® Plus 488  
Pancreatic Polypeptide antibody (CL488-15493) at  
dilution of 1:200.