

For Research Use Only

CoraLite® Plus 488-conjugated BDH1 Polyclonal antibody

Catalog Number: CL488-15417

Featured Product



Basic Information

Catalog Number:

CL488-15417

Size:

1000 ug/ml

Source:

Rabbit

Isotype:

IgG

Immunogen Catalog Number:

AG7705

GenBank Accession Number:

BC005844

GeneID (NCBI):

622

UNIPROT ID:

Q02338

Full Name:

3-hydroxybutyrate dehydrogenase, type 1

Calculated MW:

38 kDa

Observed MW:

31 kDa

Purification Method:

Antigen affinity purification

Recommended Dilutions:

IF-P 1:50-1:500

Excitation/Emission maxima wavelengths:

493 nm / 522 nm

Applications

Tested Applications:

IF-P, FC (Intra)

Species Specificity:

human, mouse, rat

Positive Controls:

IF-P: mouse liver tissue,

Background Information

BDH1 (3-hydroxybutyrate dehydrogenase, type 1) is a 343 amino acid protein that localizes to the mitochondrial matrix and belongs to the short-chain dehydrogenases/reductases (SDR) family. The deduced 343 amino acid protein contains a 46 residue leader peptide, which is cleaved to produce the mature form. It is a lipid-requiring mitochondrial enzyme with a specific requirement of phosphatidylcholine (PC).

Storage

Storage:

Store at -20°C. Avoid exposure to light. Stable for one year after shipment.

Storage Buffer:

PBS with 50% Glycerol, 0.05% Proclin300, 0.5% BSA, pH 7.3.

Aliquoting is unnecessary for -20°C storage

For technical support and original validation data for this product please contact:

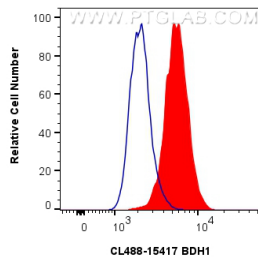
T: 4006900926

E: Proteintech-CN@ptglab.com

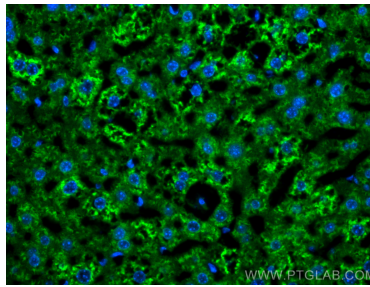
W: ptgcn.com

This product is exclusively available under Proteintech Group brand and is not available to purchase from any other manufacturer.

Selected Validation Data



1X10⁶ HepG2 cells were intracellularly stained with 0.8 ug CoraLite® Plus 488 Anti-Human BDH1 (CL488-15417) (red), or 0.8 ug CoraLite® Plus 488-conjugated Rabbit IgG control Rabbit PolyAb (CL488-30000, Clone:) (blue). Cells were fixed with 4% PFA and permeabilized with Flow Cytometry Perm Buffer (PF00011-C).



Immunofluorescent analysis of (4% PFA) fixed paraffin-embedded mouse liver tissue using CoraLite® Plus 488 BDH1 antibody (CL488-15417) at dilution of 1:200. Heat mediated antigen retrieval with Tris-EDTA buffer (pH 9.0).