

CoraLite® Plus 488-conjugated RABEPK/p40 Polyclonal antibody

Catalog Number: **CL488-15105**

Basic Information

Catalog Number:

CL488-15105

Size:

1000 µg/ml

Source:

Rabbit

Isotype:

IgG

Immunogen Catalog Number:

AG2593

GenBank Accession Number:

BC065725

GeneID (NCBI):

10244

UNIPROT ID:

Q7Z6M1

Full Name:

Rab9 effector protein with kelch motifs

Calculated MW:

41 kDa

Purification Method:

Antigen affinity purification

Recommended Dilutions:

WB 1:500-1:1000

Excitation/Emission maxima wavelengths:

493 nm / 522 nm

Applications

Tested Applications:

WB, FC (Intra)

Species Specificity:

human

Positive Controls:

WB : HeLa cells,

Background Information

Rab9 GTPase is required for the transport of mannose 6-phosphate receptors from endosomes to the trans-Golgi network in living cells, and in an in vitro system that reconstitutes this process. P40 is an effector of Rab9 that interacts preferentially with the active form of Rab9. p40 does not interact with Rab7 or K-Ras; it also fails to bind Rab9 when it is bound to GDI. The protein is found in cytosol, yet a significant fraction (~30%) is associated with cellular membranes. P40 is a very potent transport factor in that the pure, recombinant protein can stimulate, significantly, an in vitro transport assay that measures transport of mannose 6-phosphate receptors from endosomes to the trans-Golgi network.

Storage

Storage:

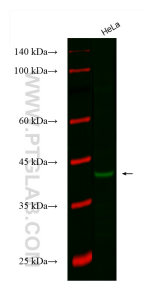
Store at -20°C. Avoid exposure to light.

Storage Buffer:

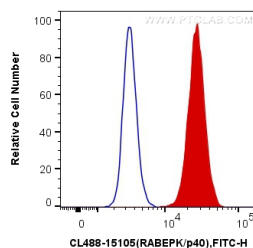
PBS with 50% Glycerol, 0.05% Proclin300, 0.5% BSA, pH 7.3.

Aliquoting is unnecessary for -20°C storage

Selected Validation Data



Various lysates were subjected to SDS PAGE followed by western blot with CL488-15105 (RABEPK/p40 antibody) at dilution of 1:500 incubated at room temperature for 1.5 hours.



1X10⁶ HeLa cells were intracellularly stained with 0.4 ug CoraLite® Plus 488 Anti-Human RABEPK/p40 (CL488-15105) (red), or 0.4 ug Control Antibody. Cells were fixed with 4% PFA and permeabilized with Flow Cytometry Perm Buffer (PF00011-C).