

For Research Use Only

# CoraLite® Plus 488-conjugated PABPC4 Polyclonal antibody



Catalog Number: **CL488-14960**

Featured Product

## Basic Information

Catalog Number:

CL488-14960

Size:

1000 µg/ml

Source:

Rabbit

Isotype:

IgG

Immunogen Catalog Number:

AG6813

GenBank Accession Number:

BC065540

GeneID (NCBI):

8761

UNIPROT ID:

Q13310

Full Name:

poly(A) binding protein, cytoplasmic 4 (inducible form)

Calculated MW:

70 kDa

Observed MW:

70-71 kDa

Purification Method:

Antigen affinity purification

Recommended Dilutions:

IF/ICC 1:200-1:800

Excitation/Emission maxima wavelengths:

493 nm / 522 nm

## Applications

Tested Applications:

IF/ICC

Species Specificity:

human, mouse, rat

Positive Controls:

IF/ICC : HepG2 cells, HeLa cells

## Background Information

### Storage

Storage:

Store at -20°C. Avoid exposure to light. Stable for one year after shipment.

Storage Buffer:

PBS with 50% Glycerol, 0.05% Proclin300, 0.5% BSA, pH 7.3.

Aliquoting is unnecessary for -20°C storage

For technical support and original validation data for this product please contact:

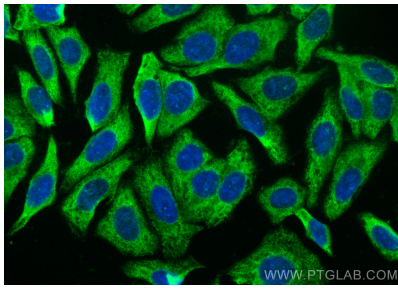
T: 4006900926

E: [Proteintech-CN@ptglab.com](mailto:Proteintech-CN@ptglab.com)

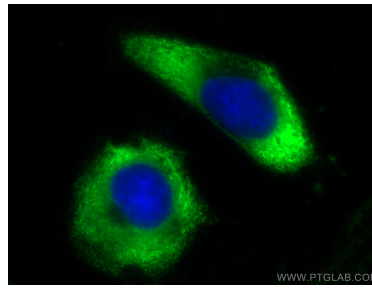
W: [ptgcn.com](http://ptgcn.com)

This product is exclusively available under Proteintech Group brand and is not available to purchase from any other manufacturer.

## Selected Validation Data



Immunofluorescent analysis of (-20°C Ethanol) fixed HepG2 cells using CoraLite® Plus 488 PABPC4 antibody (CL488-14960) at dilution of 1:400.



Immunofluorescent analysis of (-20°C Ethanol) fixed HeLa cells using CoraLite® Plus 488 PABPC4 antibody (CL488-14960) at dilution of 1:200.