

For Research Use Only

# CoraLite® Plus 488-conjugated MEPCE Polyclonal antibody



Catalog Number: CL488-14917

Featured Product

## Basic Information

Catalog Number:

CL488-14917

Size:

1000 µg/ml

Source:

Rabbit

Isotype:

IgG

Immunogen Catalog Number:

AG6733

GenBank Accession Number:

BC000556

GeneID (NCBI):

56257

UNIPROT ID:

Q7L2J0

Full Name:

methylphosphate capping enzyme

Calculated MW:

74 kDa

Observed MW:

74 kDa

Purification Method:

Antigen affinity purification

Recommended Dilutions:

IF/ICC 1:50-1:500

Excitation/Emission maxima  
wavelengths:

493 nm / 522 nm

## Applications

Tested Applications:

IF/ICC

Species Specificity:

human

Positive Controls:

IF/ICC : MCF-7 cells,

## Background Information

MEPCE is a component of the 7SK snRNP complex, and a S-adenosyl-L-methionine-dependent methyltransferase that adds a methylphosphate cap at the 5'-end of 7SK snRNA, which leads to its stabilization.

## Storage

Storage:

Store at -20°C. Avoid exposure to light. Stable for one year after shipment.

Storage Buffer:

PBS with 50% Glycerol, 0.05% Proclin300, 0.5% BSA, pH 7.3.

Aliquoting is unnecessary for -20°C storage

For technical support and original validation data for this product please contact:

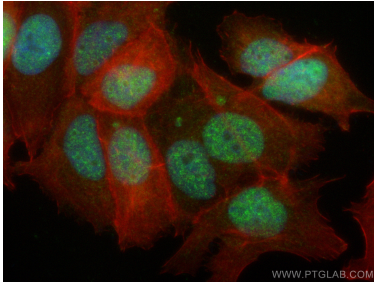
T: 4006900926

E: [Proteintech-CN@ptglab.com](mailto:Proteintech-CN@ptglab.com)

W: [ptgcn.com](http://ptgcn.com)

This product is exclusively available under Proteintech Group brand and is not available to purchase from any other manufacturer.

## Selected Validation Data



Immunofluorescent analysis of (4% PFA) fixed MCF-7 cells using CoraLite® Plus 488 MEPCE antibody (CL488-14917) at dilution of 1:200, CL594-Phalloidin (red).