

For Research Use Only



# CoraLite® Plus 488-conjugated Aldolase C Polyclonal antibody

Catalog Number:CL488-14884

Featured Product

## Basic Information

Catalog Number:

CL488-14884

Size:

1000 µg/ml

Source:

Rabbit

Isotype:

IgG

Immunogen Catalog Number:

AG6659

GenBank Accession Number:

BC003613

GeneID (NCBI):

230

UNIPROT ID:

P09972

Full Name:

aldolase C, fructose-bisphosphate

Calculated MW:

39 kDa

Observed MW:

39 kDa

Purification Method:

Antigen affinity purification

Recommended Dilutions:

IF-P 1:50-1:500

Excitation/Emission maxima wavelengths:

493 nm / 522 nm

## Applications

Tested Applications:

IF-P

Species Specificity:

human, mouse, rat

Positive Controls:

IF-P : mouse brain tissue,

## Background Information

Fructose-bisphosphate aldolase C (ALDOC) reversibly cleaves FBP and F1-P to glyceraldehyde 3-phosphate and dihydroxyacetone phosphate and is strongly expressed in mammalian brain together with ALDOA and is also present in the heart and spleen of some species(PMID:9363598). It is involved in glycolysis as an important enzyme. Phospholipase D2 and inositol 1,4,5-triphosphate interact with ALDOC in signal transduction. Meanwhile, the protein expression of ALDOC has been reported to be regulated in brain tumor, hepatomas, and lung cancer(PMID:21548097).14884-1-AP can recognize Aldolase A and Aldolase C

## Storage

Storage:

Store at -20°C. Avoid exposure to light. Stable for one year after shipment.

Storage Buffer:

PBS with 50% Glycerol, 0.05% Proclin300, 0.5% BSA, pH 7.3.

Aliquoting is unnecessary for -20°C storage

For technical support and original validation data for this product please contact:

T: 4006900926

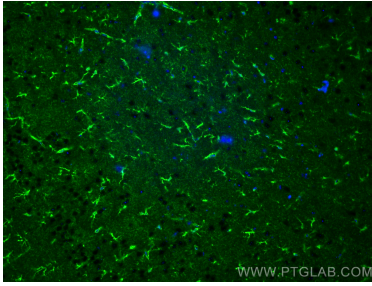
E: [Proteintech-CN@ptglab.com](mailto:Proteintech-CN@ptglab.com)

W: [ptgcn.com](http://ptgcn.com)

This product is exclusively available under Proteintech Group brand and is not available to purchase from any other manufacturer.

---

## Selected Validation Data



Immunofluorescent analysis of (4% PFA) fixed paraffin-embedded mouse brain tissue using CoraLite® Plus 488 Aldolase C antibody (CL488-14884) at dilution of 1:200. Heat mediated antigen retrieval with Tris-EDTA buffer (pH 9.0).