

For Research Use Only

CoraLite® Plus 488-conjugated CNPY2, MSAP Polyclonal antibody



Catalog Number: CL488-14635

Featured Product

Basic Information

Catalog Number:

CL488-14635

Size:

1000 µg/ml

Source:

Rabbit

Isotype:

IgG

Immunogen Catalog Number:

AG6214

GenBank Accession Number:

BC065015

GeneID (NCBI):

10330

UNIPROT ID:

Q9Y2B0

Full Name:

canopy 2 homolog (zebrafish)

Calculated MW:

21 kDa

Observed MW:

17-21 kDa

Purification Method:

Antigen affinity purification

Excitation/Emission maxima
wavelengths:

493 nm / 522 nm

Applications

Tested Applications:

FC (Intra)

Species Specificity:

human, mouse, rat

Background Information

CNPY2, also named as MSAP, TMEM4 and ZSIG9, is a positive regulator of neurite outgrowth. It interacts with the ezrin-radixin-moesin (ERM)-like myosin regulatory light chain-interacting protein (MIR), and the two proteins are co-localized in cell lines and in primary neurons. CNPY2 can stabilize MRLC and thus bring about an increase in neurite outgrowth. (PMID: 12826659) This antibody is specific to CNPY2.

Storage

Storage:

Store at -20°C. Avoid exposure to light. Stable for one year after shipment.

Storage Buffer:

PBS with 50% Glycerol, 0.05% Proclin300, 0.5% BSA, pH 7.3.

Aliquoting is unnecessary for -20°C storage

For technical support and original validation data for this product please contact:

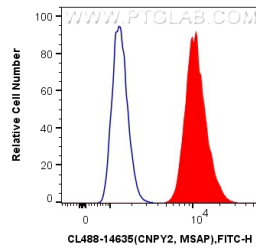
T: 4006900926

E: Proteintech-CN@ptglab.com

W: ptgcn.com

This product is exclusively available under Proteintech Group brand and is not available to purchase from any other manufacturer.

Selected Validation Data



1X10⁶ HepG2 cells were intracellularly stained with 0.4 ug CoraLite® Plus 488 Anti-Human CNPY2, MSAP (CL488-14635) (red), or 0.4 ug CoraLite® Plus 488-conjugated Rabbit IgG control Rabbit PolyAb (CL488-30000, Clone:) (blue). Cells were fixed with 4% PFA and permeabilized with Flow Cytometry Perm Buffer (PF00011-C).