

For Research Use Only

# CoraLite® Plus 488-conjugated RABEP2 Polyclonal antibody



Catalog Number: **CL488-14625**

## Basic Information

Catalog Number:

CL488-14625

Size:

1000 µg/ml

Source:

Rabbit

Isotype:

IgG

Immunogen Catalog Number:

AG6197

GenBank Accession Number:

BC058900

GeneID (NCBI):

79874

UNIPROT ID:

Q9H5N1

Full Name:

rabaptin, RAB GTPase binding effector

protein 2

Calculated MW:

64 kDa

Observed MW:

59-62 kDa

Purification Method:

Antigen affinity purification

Recommended Dilutions:

IF/ICC 1:50-1:500

Excitation/Emission maxima  
wavelengths:

493 nm / 522 nm

## Applications

Tested Applications:

IF/ICC, FC (Intra)

Species Specificity:

human, mouse, rat

Positive Controls:

IF/ICC : MCF-7 cells,

## Background Information

RABEP2, also named as RABPT5B, plays a role in membrane trafficking and in homotypic early endosome fusion. It has two isoforms with MW 59-63 kDa.

## Storage

Storage:

Store at -20°C. Avoid exposure to light. Stable for one year after shipment.

Storage Buffer:

PBS with 50% Glycerol, 0.05% Proclin300, 0.5% BSA, pH 7.3.

Aliquoting is unnecessary for -20°C storage

For technical support and original validation data for this product please contact:

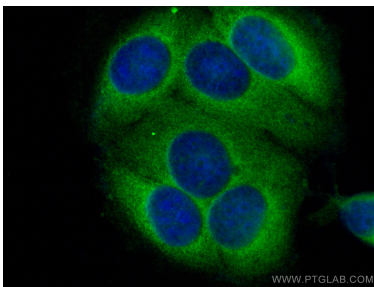
T: 4006900926

E: [Proteintech-CN@ptglab.com](mailto:Proteintech-CN@ptglab.com)

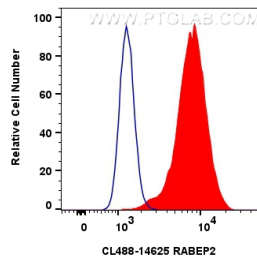
W: [ptgcn.com](http://ptgcn.com)

This product is exclusively available under Proteintech Group brand and is not available to purchase from any other manufacturer.

## Selected Validation Data



Immunofluorescent analysis of (-20°C Methanol) fixed MCF-7 cells using CoraLite® Plus 488 RABEP2 antibody (CL488-14625) at dilution of 1:200.



1x10<sup>6</sup> MCF-7 cells were intracellularly stained with 0.8 ug CoraLite® Plus 488 Rabep2 Polyclonal Antibody (CL488-14625)(red), or 0.8 ug CoraLite® Plus 488-conjugated Rabbit IgG control Rabbit PolyAb (CL488-30000) (blue). Cells were fixed with 4% PFA and permeabilized with Flow Cytometry Perm Buffer (PF00011-C).